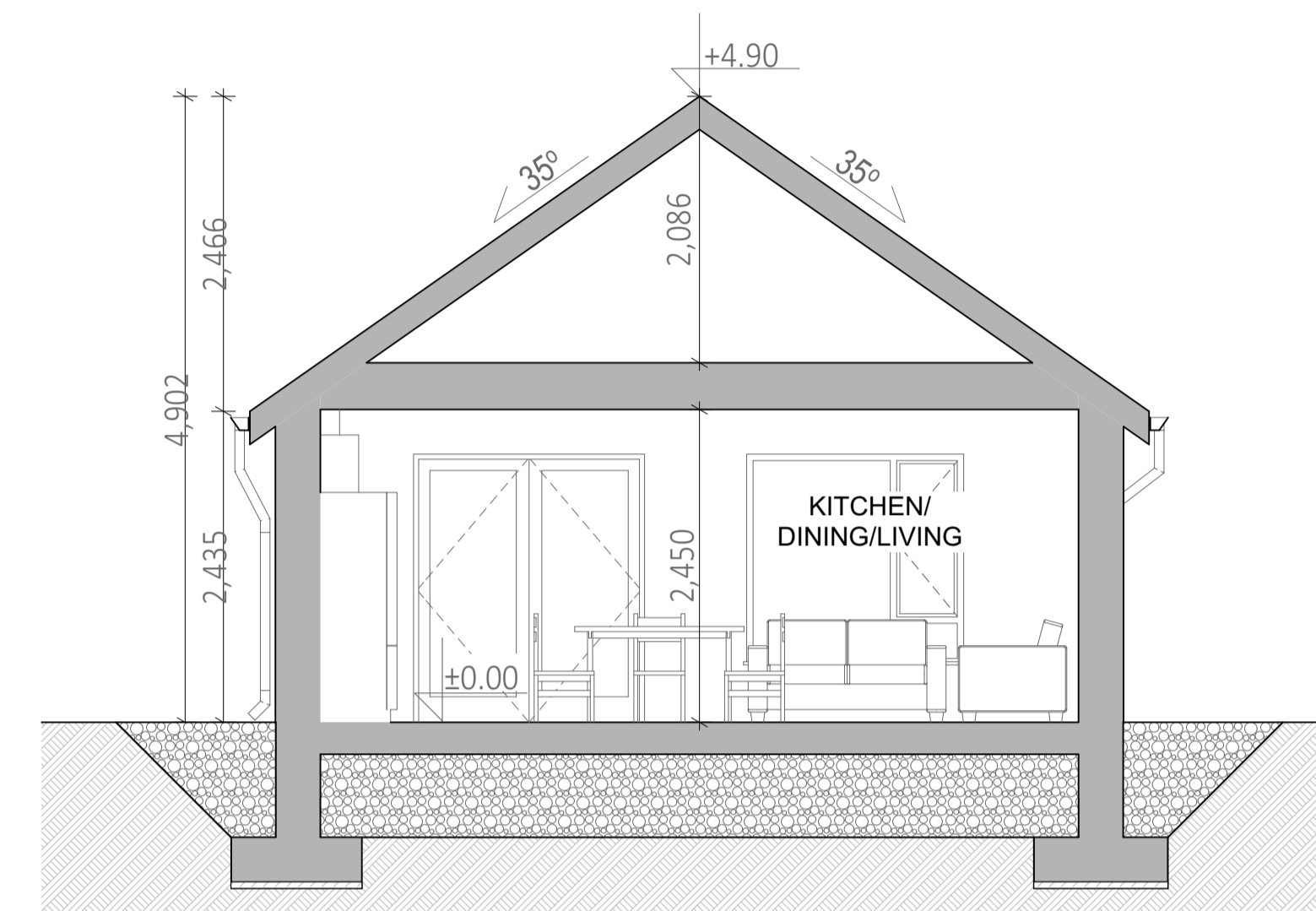
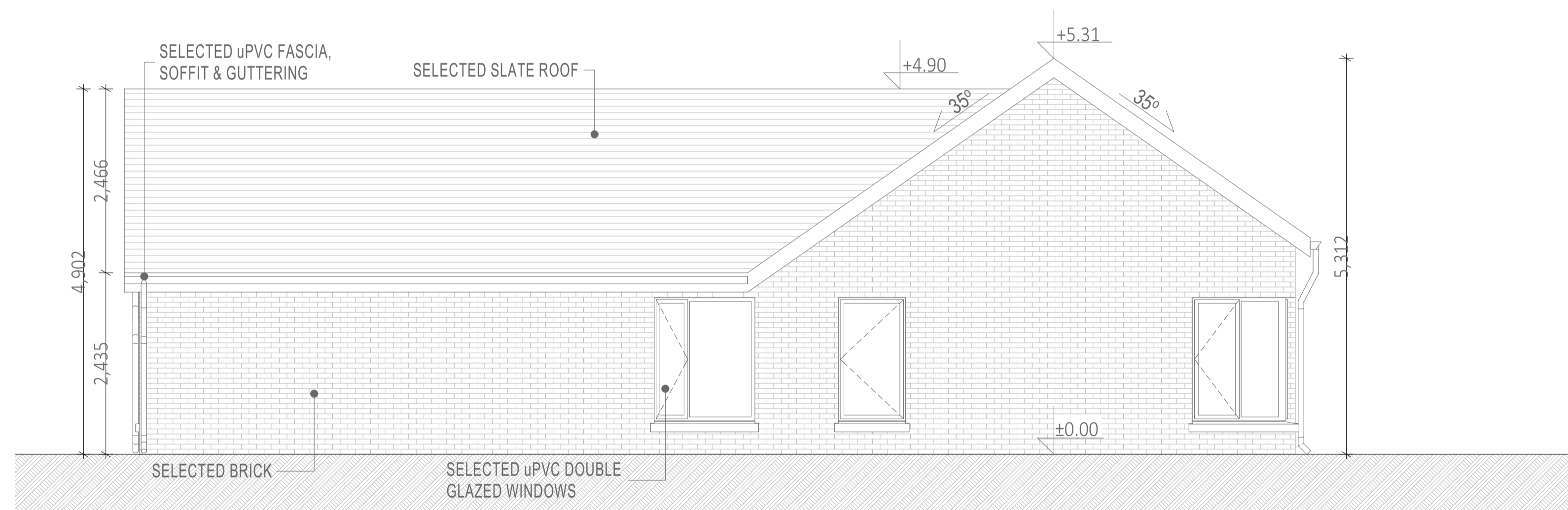


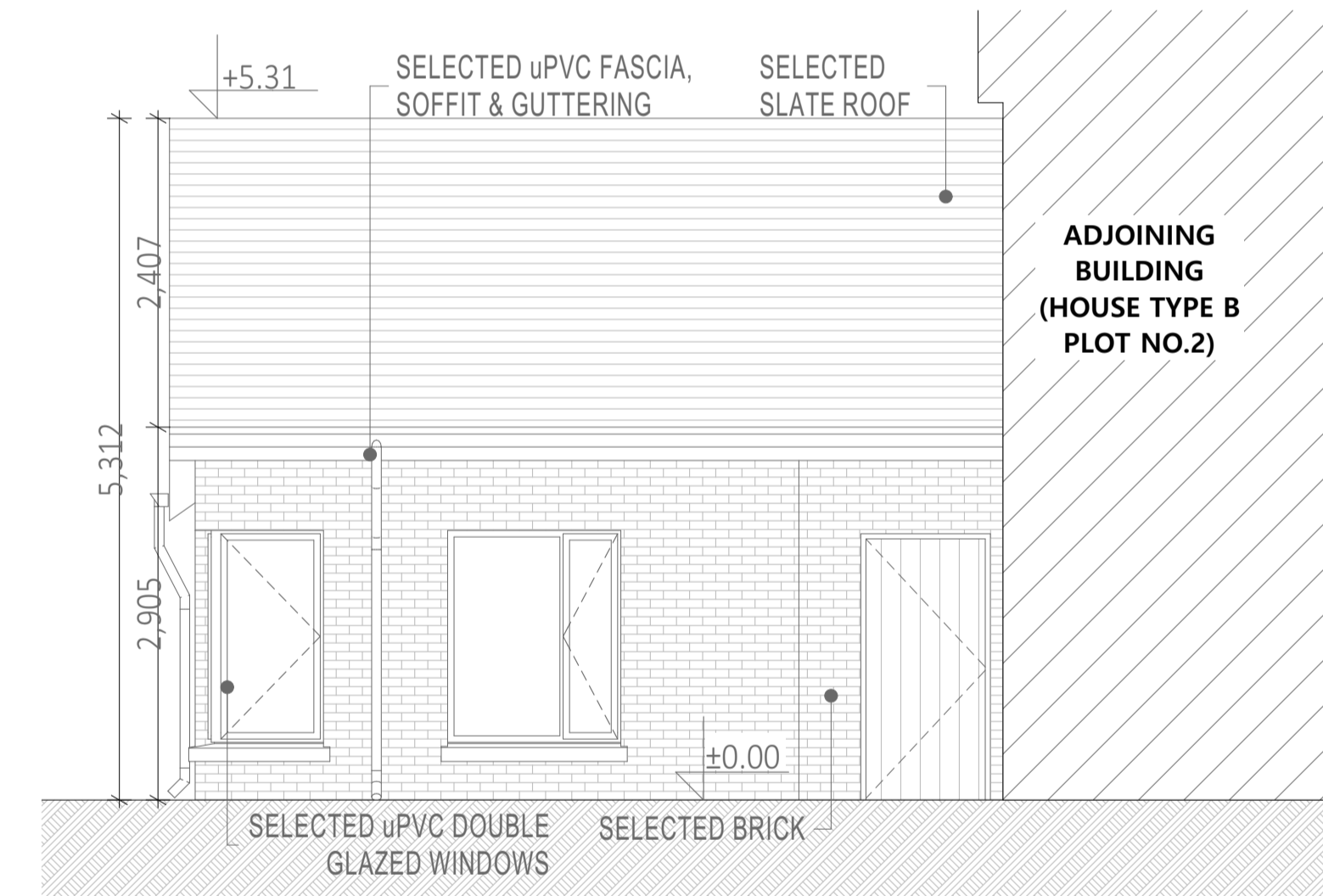
Ground Floor
1:50



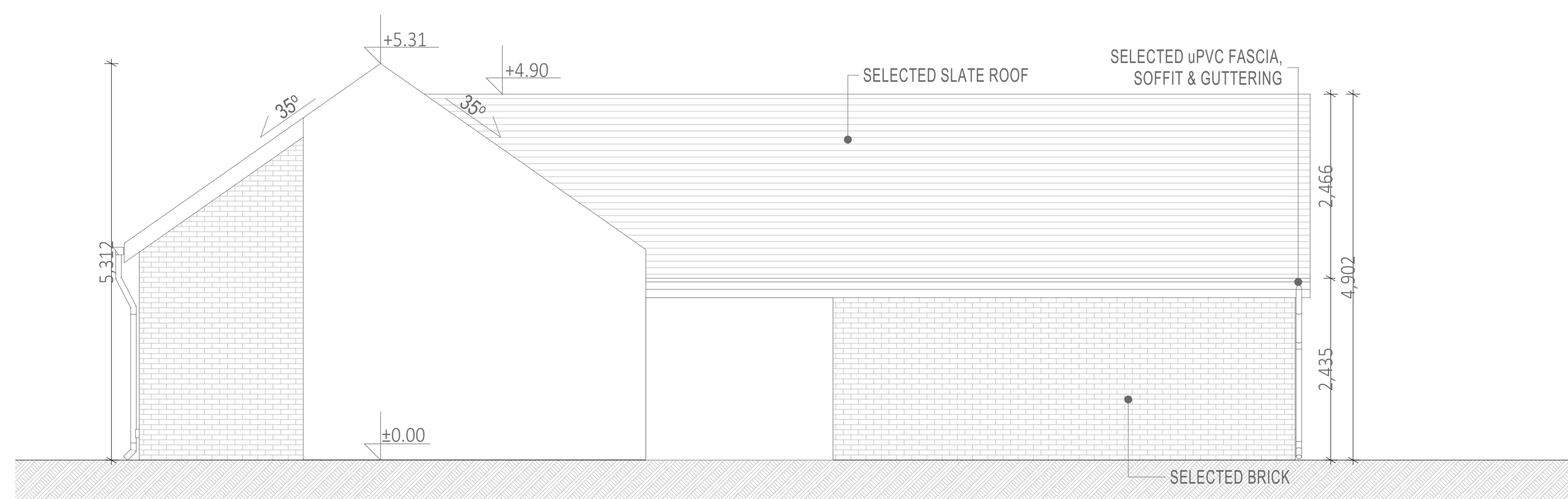
Section A-A
1:50



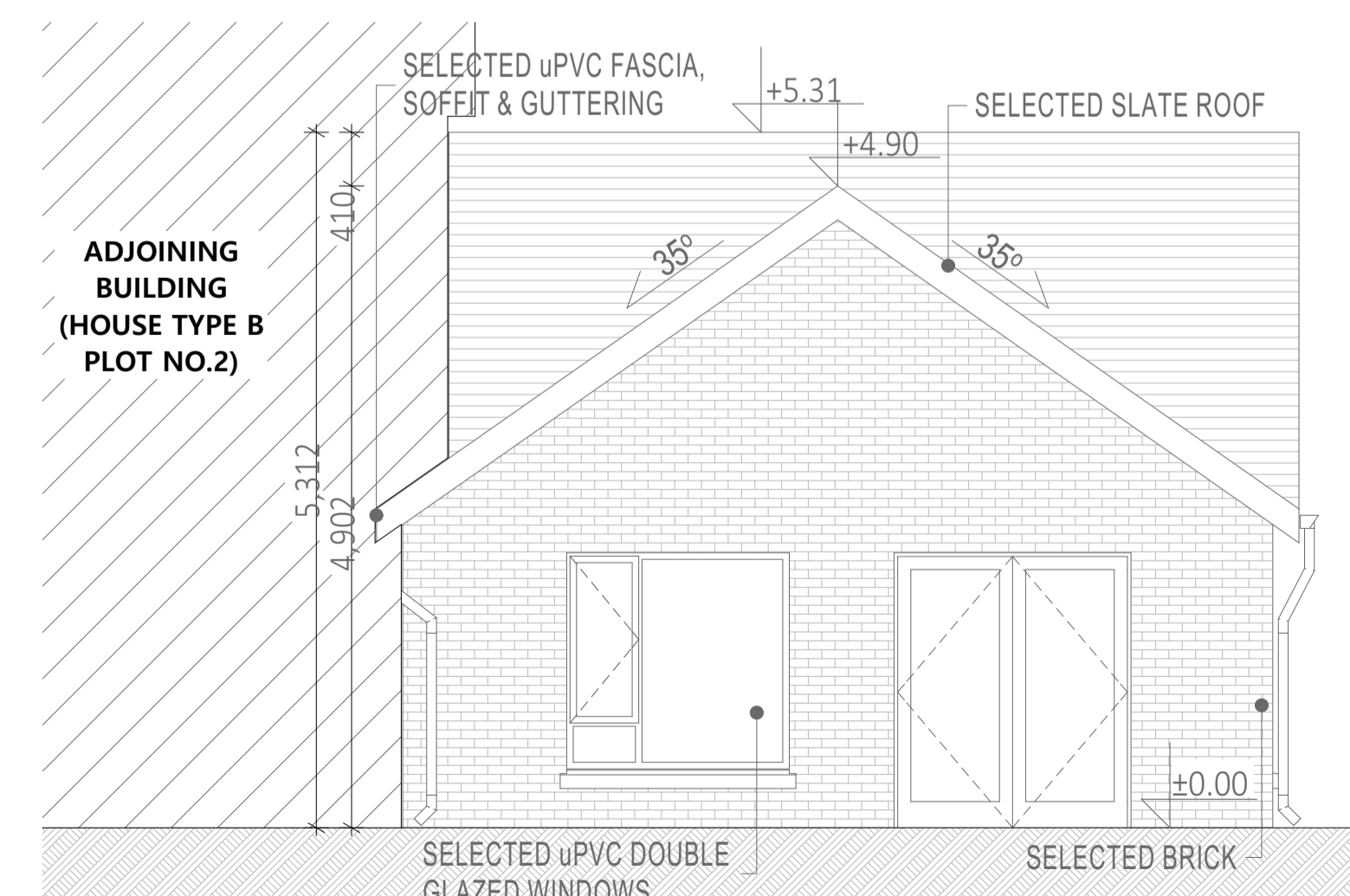
Side Elevation
1:50



Front Elevation
1:50



Side Elevation
1:50

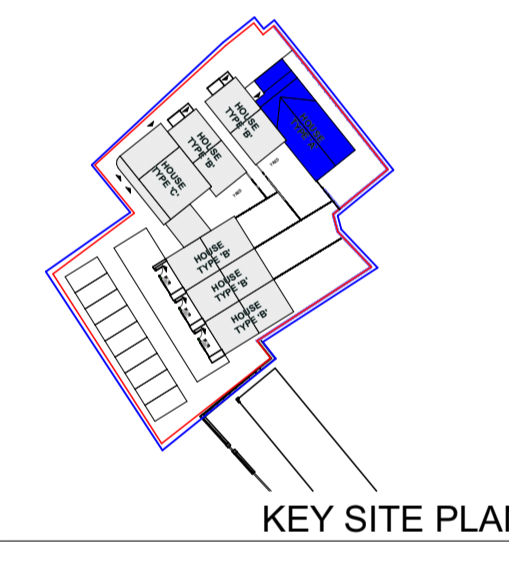


Rear Elevation
1:50



3D Image

House Type A	Single Storey Dwelling (IWA)
Areas	Regulation Sizes
Total Area	70m ²
Living Room Area	13m ²
Total Living Area	30m ²
Total Bedroom Area	25m ²
Storage	4m ²
Living Room Width	3.6m
Double Bedroom Width	2.8m



KEY SITE PLAN



HOUSE TYPE A
Single Storey Dwelling (IWA)
Ground Floor Area:
83.6m²/ 899.87 ft²

Rev Issue Date Description Approved by
Purpose of Issue
PART 8 PLANNING SUBMISSION

Wynne Gormley Gilson Architects & Surveyors Ltd.

© WGG ARCHITECTS & SURVEYORS LTD
COPYRIGHT RESERVED
JOB DETAILS
Proposed Housing Development
@ Widows Row Corporation Land,
Belturbet, Co. Cavan
for Cavan County Council

Scale @ A1
As indicated
Date 18/10/2022
Drawn by J. Mrowiec
P. Brady
Checked by P. Wynne
Dwg no PL21-124-200
Amend.
Description House Type A (Plot no.1)

21, Church View, Cavan
T +353 49 43 61096
F +353 49 43 62907
E info@wggarchitects.ie
W www.wggarchitects.ie

