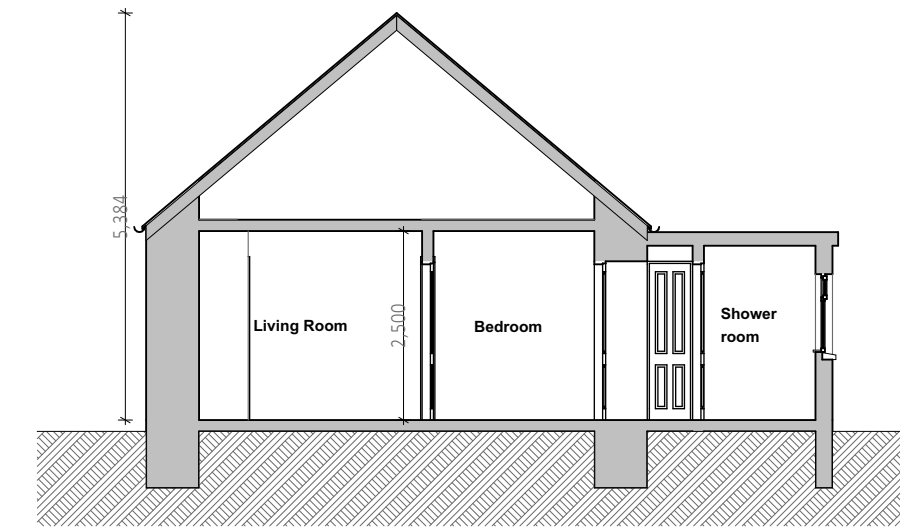
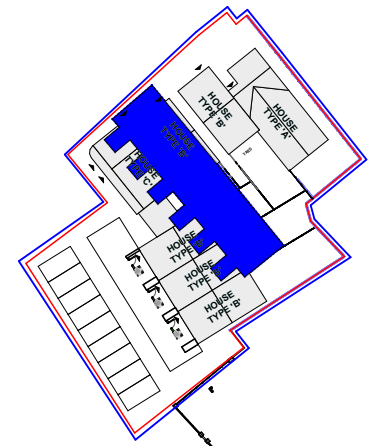


GF-Ground Floor
1:100



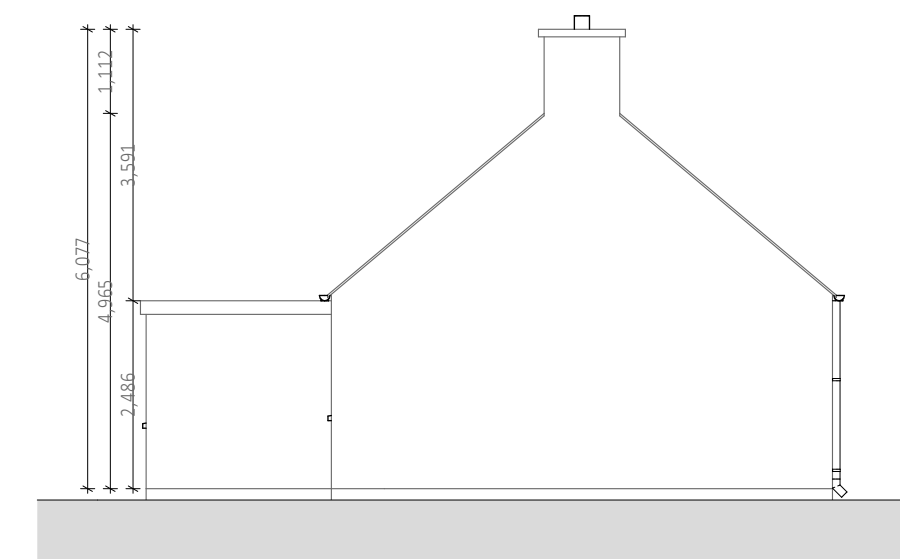
Section A-01
1:100



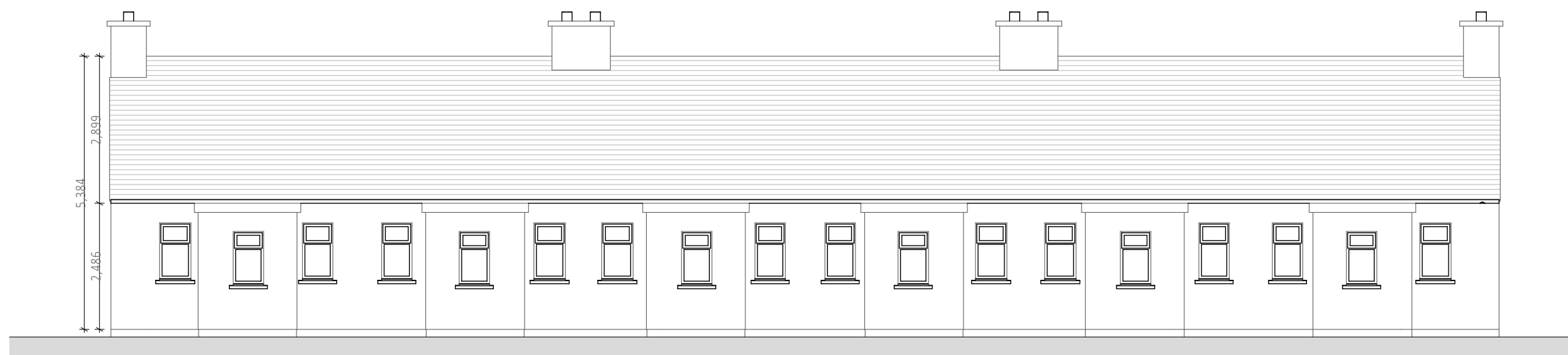
KEY SITE PLAN



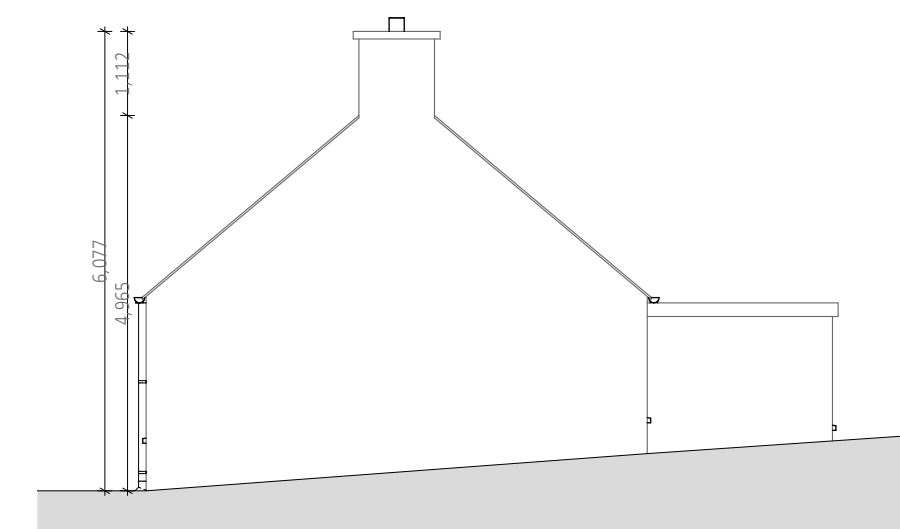
Front Elevation
1:100



Side Elevation
1:100



Rear Elevation
1:100



Side Elevation
1:100



AS BUILT DRAWING

| Rev | Issue Date | Description | Approved by |
|-----|------------|-------------|-------------|
| | | | |

Purpose of Issue
PART 8 PLANNING SUBMISSION

Wynne Gormley Architects & Surveyors Ltd.

© WGG ARCHITECTS & SURVEYORS LTD
COPYRIGHT RESERVED

JOB DETAILS
**Proposed Housing Development
@ Widows Row Corporation Land, Belturbet
Co. Cavan
for Cavan County Council**

| | | |
|-----------------------------|-----------------------------------|--------|
| Scale @ A2 1:100, 1:1000 | Dwg.no PL21-124-105 | Amend. |
| Date 14/10/2022 | Description Existing Dwellings | |
| Drawn by D Healy | | |
| Checked by J Mrowiec | | |
| P Wynne | | |

21, Church View, Cavan
T +353 49 43 61096
F +353 49 43 62907
E info@wggarchitects.ie
W www.wggarchitects.ie

