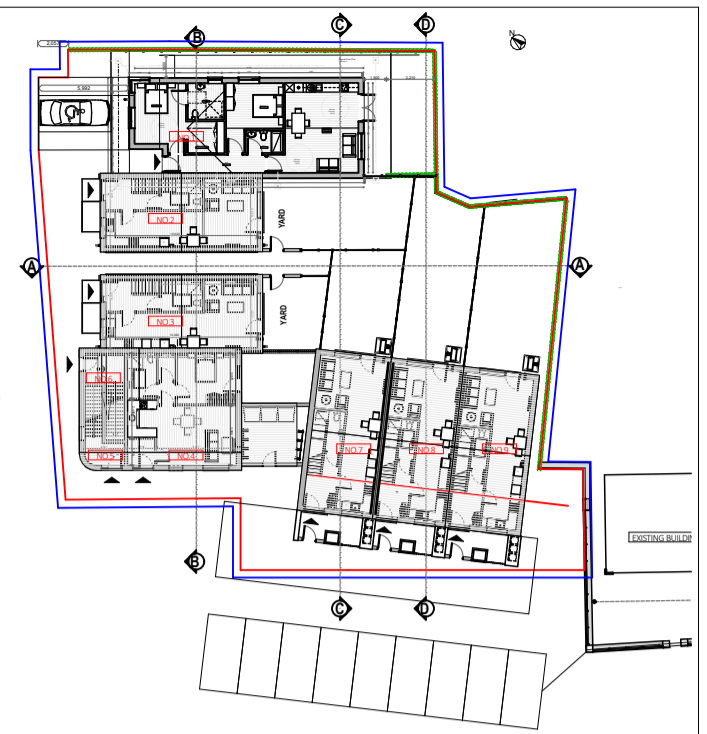
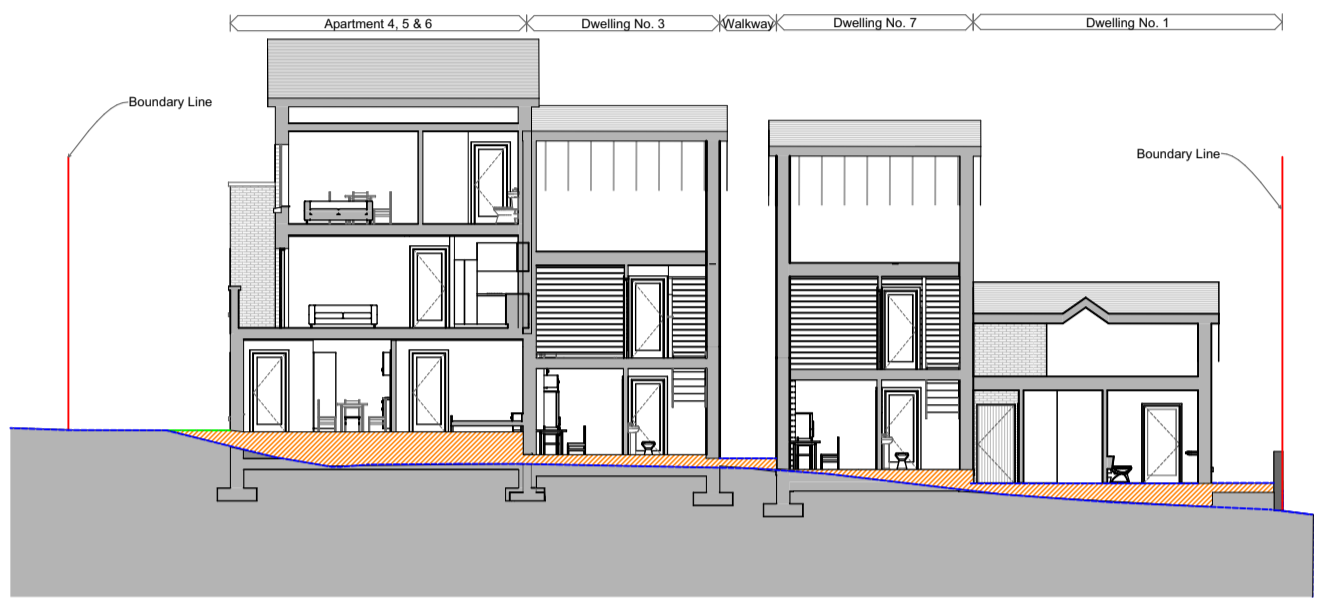


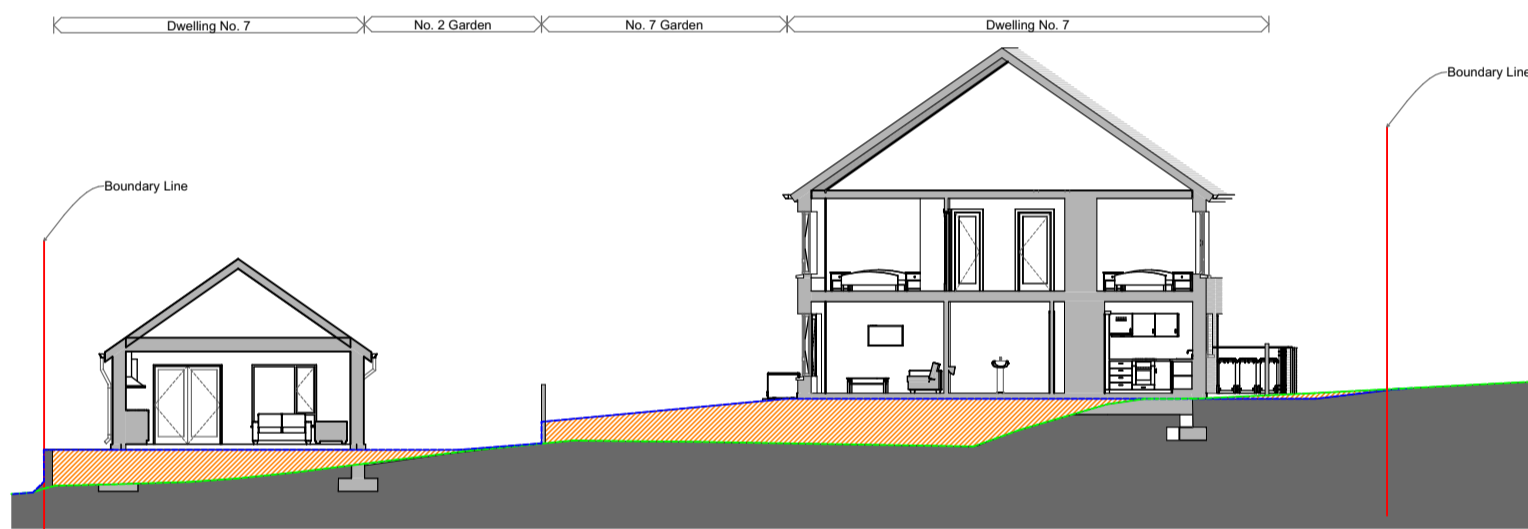
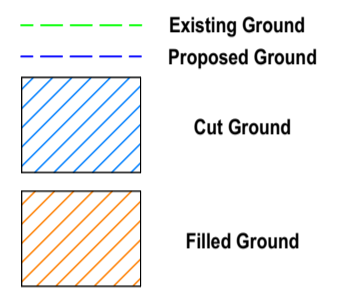
Site Section A-A



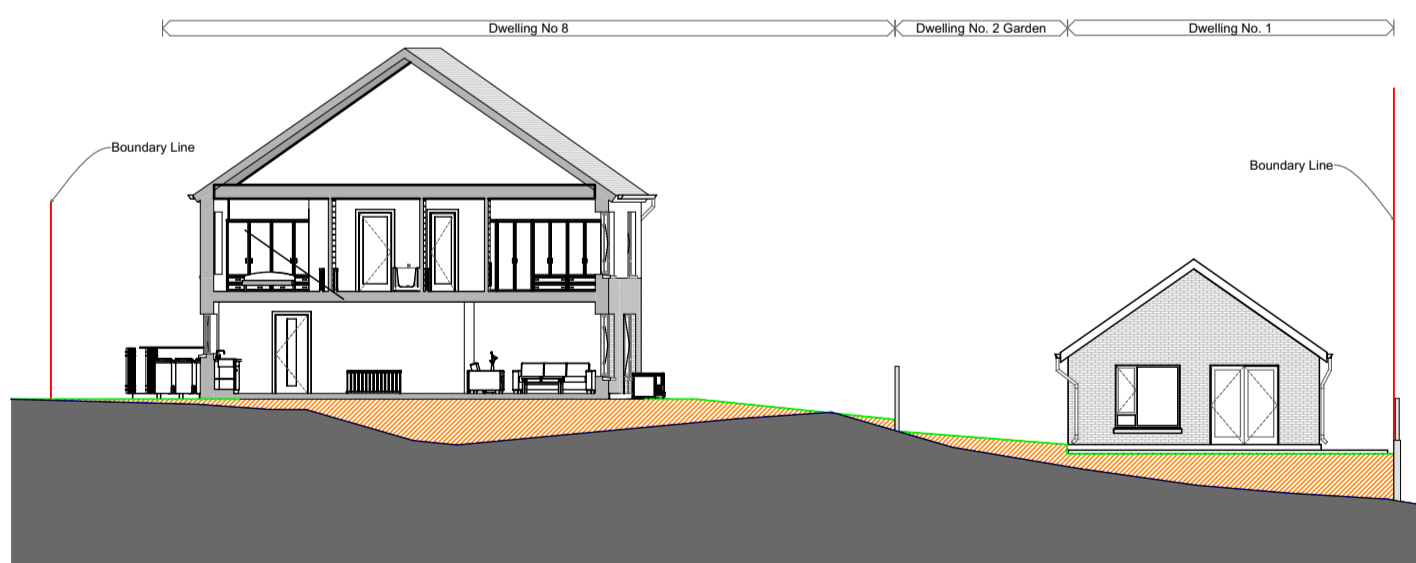
Key Plan



Site Section B-B



Site Section C-C



Site Section D-D



Rev	Issue Date	Description	Approved by
Purpose of Issue			

Wynne Gormley Architects & Surveyors Ltd.
Giltsenan

© WGG ARCHITECTS & SURVEYORS LTD
COPYRIGHT RESERVED

JOB DETAILS
**Proposed Housing @
Widow's Row, Corporation Land, Belturbet,
Co. Cavan for Cavan County Council**

Scale @ A3 1:200, 1:500, 1:50, 1:5.00	Dwg.no PL21-124-103	Amend.
Date 13/10/2022	Description Site Sections	
Drawn by J Mrowiec		
Checked by P Wynne		

21, Church View, Cavan
T +353 49 43 61096
F +353 49 43 62907
E info@wggarchitects.ie
W www.wggarchitects.ie

