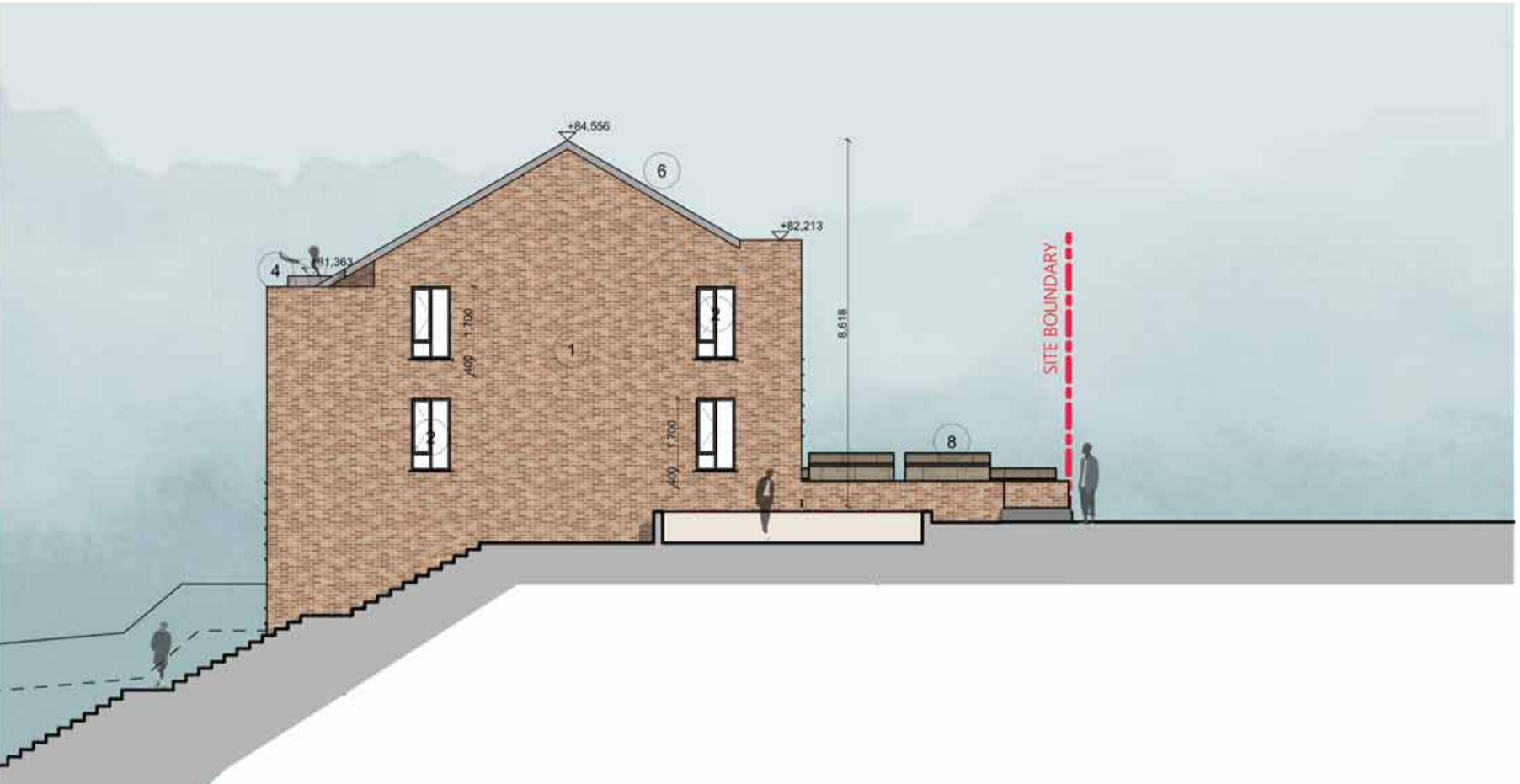




E-06 ELEV-06 Block B Proposed Side Elevation 1:150



E-08 ELEV-08 Block B Proposed Side Elevation 1:150



Key Site Plan 1:500

LOCATION OF BLOCK_B ON SITE

MATERIAL LEGEND

- 1 Approved Brick Finish
- 2 RAL Grey PVC Windows
- 3 Recessed Brick Feature
- 4 Approved Powder Coated Metal Panels
- 5 RAL Grey Doors
- 6 Slate / Tile Finish to Roof
- 7 Glass balustrade
- 8 Private Bin Store



E-05 ELEV-05 Block B Proposed Rear Elevation 1:150

BLOCK B
PLANNING DRAWINGS



E-07 ELEV-07 Block B Proposed Front Elevation Facing onto St. Brigid's Terrace 1:150

ISSUE	DATE	DESCRIPTION	APPD
P02	13-06-2022	Issued for Planning	DR
P01	14-04-2022	Issued for Planning	DR

Michael Fitzpatrick ARCHITECTS

RIAI PRACTICE NO. 11039

© MICHAEL FITZPATRICK ARCHITECTS LIMITED
COPYRIGHT RESERVED

PROJECT DETAILS
Proposed development at St. Brigid's Terrace, Co. Cavan for Cavan County Council
BLOCK - B ELEVATIONS

Document Name:
Project No. Project Originator Volume Level Type Role Sheet No.
21072- SBT- MFA-00- ZZ- DR- A -508

Suitability-Status-Code-Description Issue:
S2_Suitable_For_Information **P02**

Scale: Drawn by: Checked by: Date:
As indicated Devanshi Shah David Reilly 13/06/2022 @ A2

Main Street
Butlersbridge
Co. Cavan
w - www.mfarchitects.ie
e - info@mfarchitects.ie
t - 049 4365800

RIAI RIAI RIAI