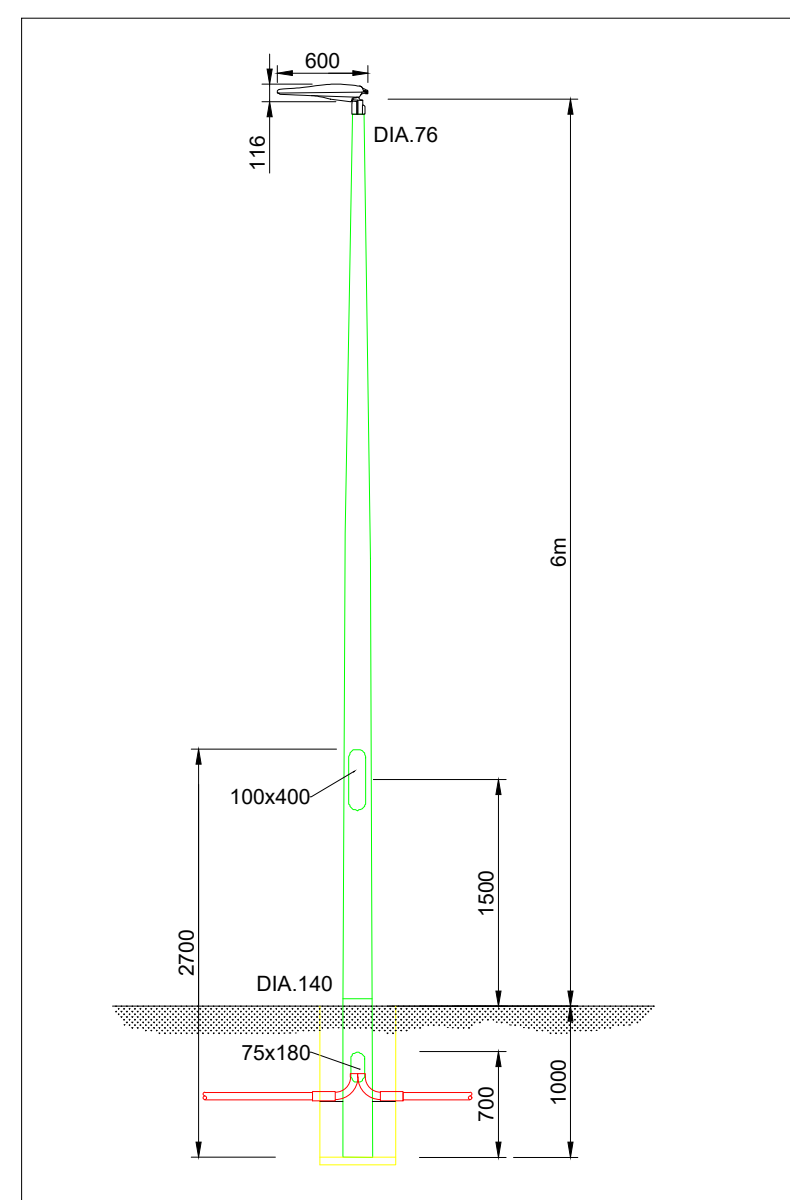


UNMETERED PUBLIC LIGHTING SINGLE PHASE MICRO PILLAR 1:25 (A1)



TYPICAL DETAIL OF STREET LIGHTING & OCTAGONAL COLUMN N.T.S. (A1)



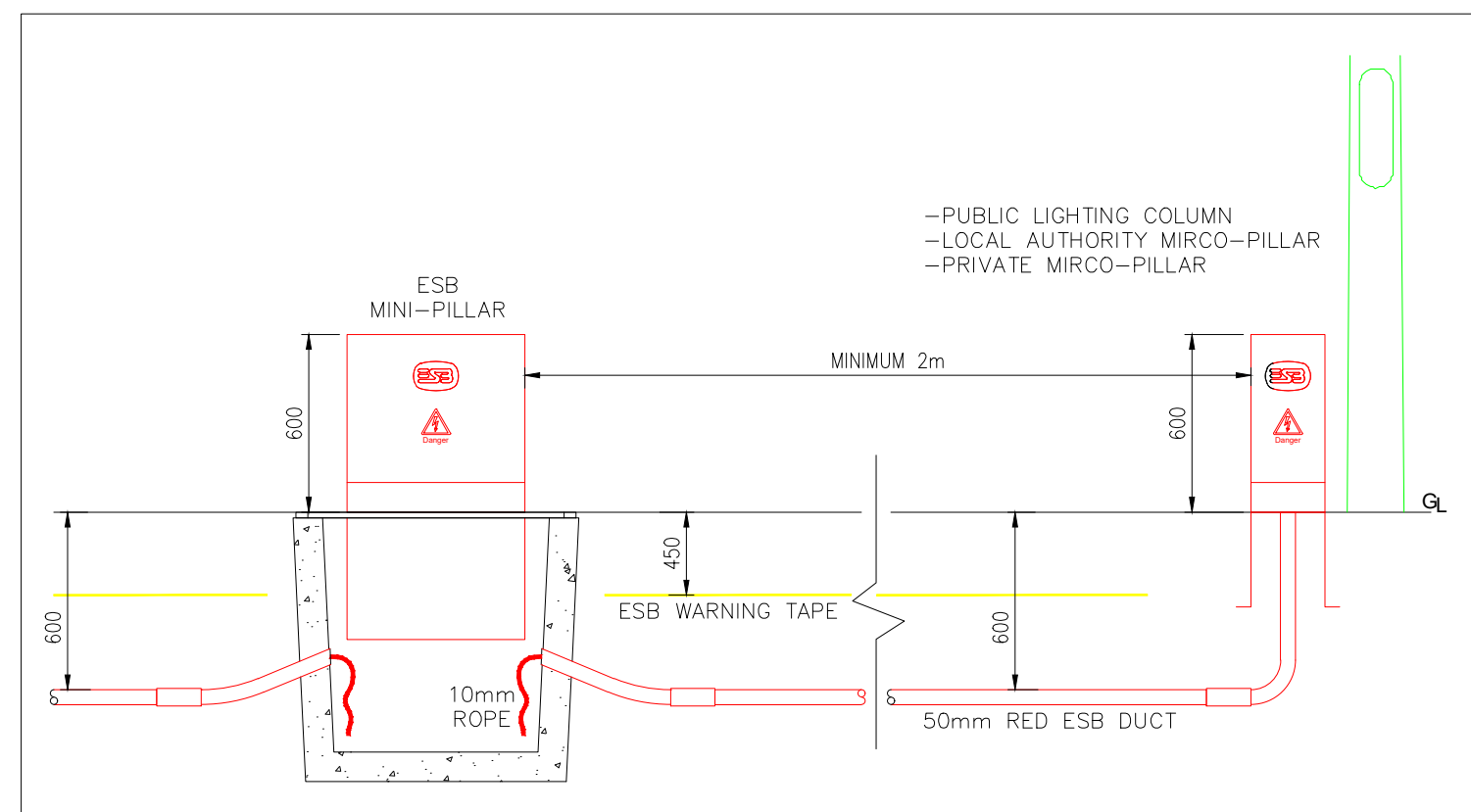
TYPICAL IMAGE OF TYPE A-A LUMINAIRE N.T.S. (A1)



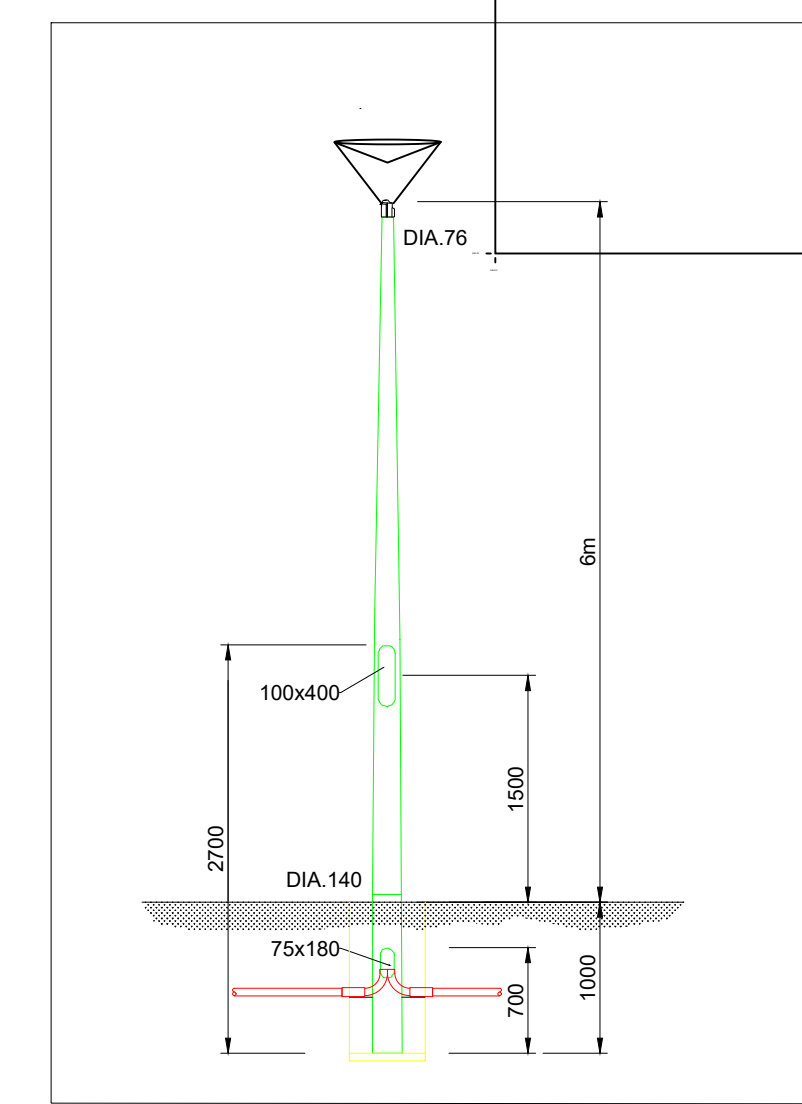
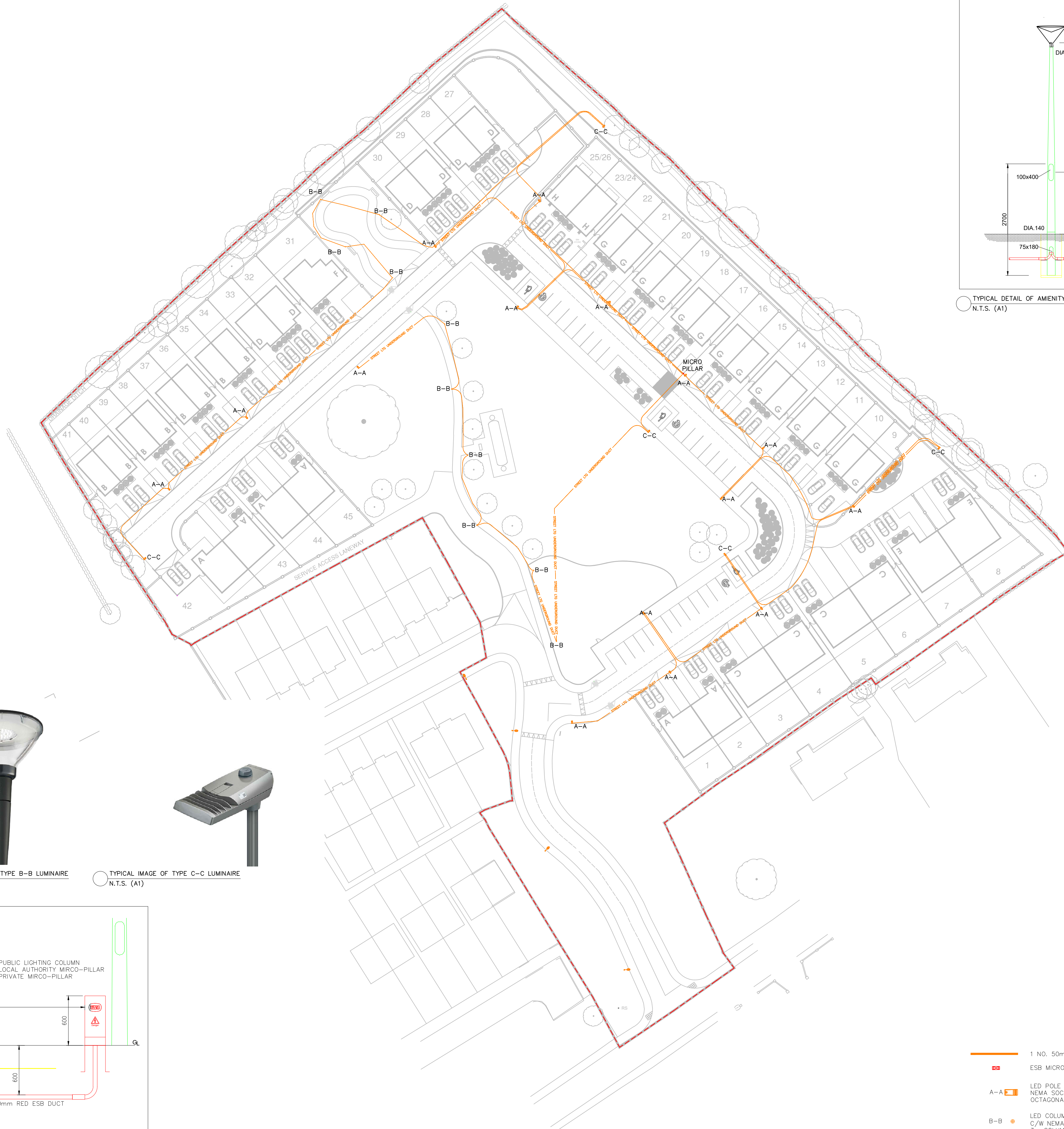
TYPICAL IMAGE OF TYPE B-B LUMINAIRE N.T.S. (A1)



TYPICAL IMAGE OF TYPE C-C LUMINAIRE N.T.S. (A1)

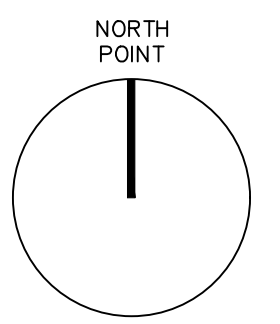


PUBLIC LIGHTING MICRO PILLAR/MINI PILLAR DETAIL 1:25 (A1)



TYPICAL DETAIL OF AMENITY LIGHTING & OCTAGONAL COLUMN N.T.S. (A1)

- General Notes**
- A. DO NOT SCALE FROM THIS DRAWING - WORK ONLY FROM FIGURED DIMENSIONS.
 - B. ALL ERRORS & OMISSIONS TO BE REPORTED TO THE CONSULTING ENGINEER
 - C. THIS DRAWING IS TO BE READ IN CONJUNCTION WITH ARCHITECTS AND STRUCTURAL ENGINEERS DRAWINGS.
 - D. REFER TO DOCUMENT REGISTER FOR DESCRIPTION OF STATUS CODES.
1. THIS DRAWING SHALL BE READ IN CONJUNCTION WITH ALL OTHER RELEVANT DRAWINGS & CONTRACT DOCUMENTS
 2. THE CONTRACTOR SHALL ENSURE THAT THE INSTALLATION COMPLIES WITH LOCAL AUTHORITY CODES AND ALL OTHER RELEVANT STANDARDS.
 3. THE INSTALLATION SHALL BE COMPLETED IN ACCORDANCE WITH ETCI REGULATIONS, ESB NETWORKS NATIONAL CODE OF PRACTICE & LOCAL AUTHORITY REQUIREMENTS.
 4. THE CONTRACTOR SHALL BE RESPONSIBLE FOR THE CO-ORDINATION OF ALL UNDERGROUND SERVICES.
 5. THE CONTRACTOR IS TO ALLOW FOR THE SUPPLY AND INSTALLATION OF ACCESS CHAMBERS ON DUCTING AS REQUIRED AT CHANGES IN DIRECTION & ON DUCT RUNS IN EXCESS OF 35m
 6. WIDE RADIUS & GENTLY SWEEPING BENDS TO BE USED ON DUCTING SET IN CONCRETE
 7. ALL DUCTING TO BE LOCATED IN FOOTPATHS & SOFT LANDSCAPING
 8. NOT MORE THAN SIX COLUMNS MAY BE SUPPLIED FROM ANY ONE CIRCUIT AND NOT MORE THAN FOUR CIRCUITS MAY BE TAKEN FROM ANY ONE PUBLIC LIGHTING MICRO PILLAR
 9. A MINIMUM COVER OF 600mm TO THE DUCTING SHOULD BE PROVIDED IN GRASS MARGINS. A MINIMUM COVER OF 750mm TO THE DUCTING SHOULD BE PROVIDED AT ROAD CROSSINGS
 10. CABLE JOINTS ARE NOT PERMITTED. CABLES SHOULD BE LOOPED FROM COLUMN TO COLUMN ON EACH CIRCUIT
 11. STREET LIGHTING COLUMNS SHALL BE 6m & 8m OCTAGONAL GALVANISED COLUMNS SUPPLIED BY FITLOW ENGINEERING, LAMPPOST CONSTRUCTION OR EQUAL & APPROVED. COLUMNS & COLUMN INSTALLATION TO COMPLY WITH DEPARTMENT OF THE ENVIRONMENT & LOCAL AUTHORITY REQUIREMENTS
 12. LIGHTING COLUMNS TO BE POSITIONED TO COINCIDE WITH PROPERTY PARTY LINES TO AVOID OBSTRUCTING ENTRANCES.
 13. PUBLIC LIGHTING CONNECTION SHALL BE BY UNDERGROUND CABLE FROM THE NEAREST ESB NETWORKS MINIPILLAR TO THE PUBLIC LIGHTING SYSTEM MICRO-PILLAR.
 14. THE CONTRACTOR SHALL SUPPLY AND INSTALL AN ESB NETWORKS APPROVED 50mm OD RED CONTINUOUS SERVICE DUCT AT A DEPTH OF 600mm FROM ESB NETWORKS' MINIPILLAR VAULT, TO THE PUBLIC LIGHTING SYSTEM MICRO-PILLAR.
 15. THE CONTRACTOR SHALL INSTALL ESB NETWORKS APPROVED YELLOW WARNING TAPE 300mm BELOW FINISHED GROUND LEVEL ALONG THE FULL LENGTH OF AND OVER THE DUCT.
 16. THE CONTRACTOR SHALL SUPPLY AND INSTALL A STRONG CONTINUOUS 10mm POLYPROPYLENE DRAW ROPE SECURED AT BOTH ENDS IN THE DUCT.
 17. THE CONTRACTOR SHALL PROVIDE A COMPLETION CERTIFICATE FOR THE PUBLIC LIGHTING SYSTEM.
 18. THERE SHOULD BE A SEPARATION OF AT LEAST 2 METERS BETWEEN ESB NETWORKS' MINIPILLAR AND THE PUBLIC LIGHTING SYSTEM MICRO-PILLAR. PUBLIC LIGHTING COLUMN OR ANY OTHER PRIVATE MICRO PILLAR.



C01	A3	AUG '22	ISSUED FOR PART B	C.G
P01	S2	MAY '22	ISSUED FOR REVIEW/COMMENT	C.G
Rev	Status	Date	Description	D.E.

Revision	Project Drawing Reference		
C01	21666-VCE-ZZ-DR-E-1003		
Status	Varming Project Number		
A3	21666		
Date	Checked By	Drawn By	Scale
AUG '22	J.G.	C.G.	1:500 @ A1

Client
Cavan County Council
 Farnham Centre, Farnham Street, Cavan, H12 RBV2

Project Title
Páirc na Teile, Beckscourt, Bailieborough, Co. Cavan

Drawing Title
**Electrical Services
 Public Lighting Site Infrastructure**

Varming
 Consulting Engineers Ltd.

Dublin	01 4872300
Cork	021 2375080
Roscommon	090 6602380
Website	www.varming.ie

- 1 No. 50mmØ RED SITE LIGHTING DUCT
- ESB MICRO-PILLAR
- A-A LED POLE MOUNTED LUMINAIRE C/W NEMA SOCKET, PHOTOCELL & 6m OCTAGONAL GALVANISED STEEL COLUMN
- B-B LED COLUMN MOUNTED LUMINAIRE C/W NEMA SOCKET, PHOTOCELL & 3m COLUMN