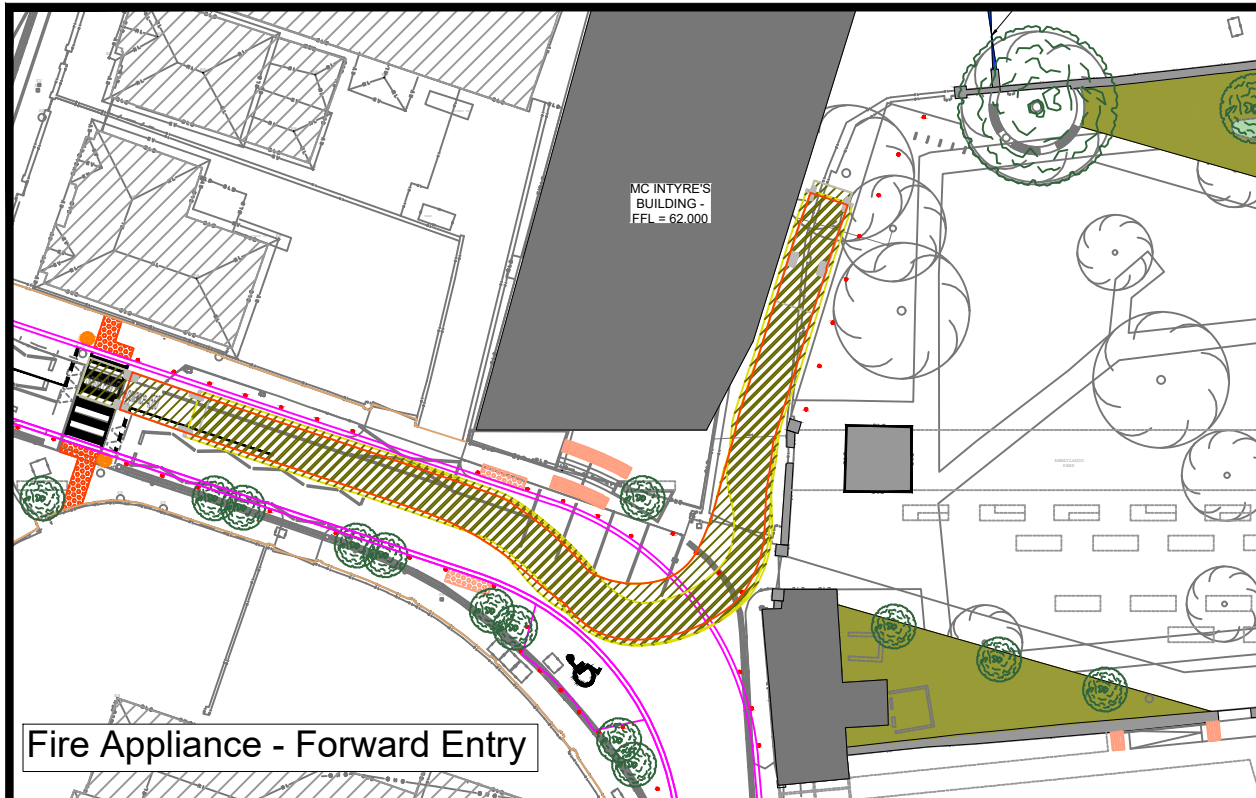
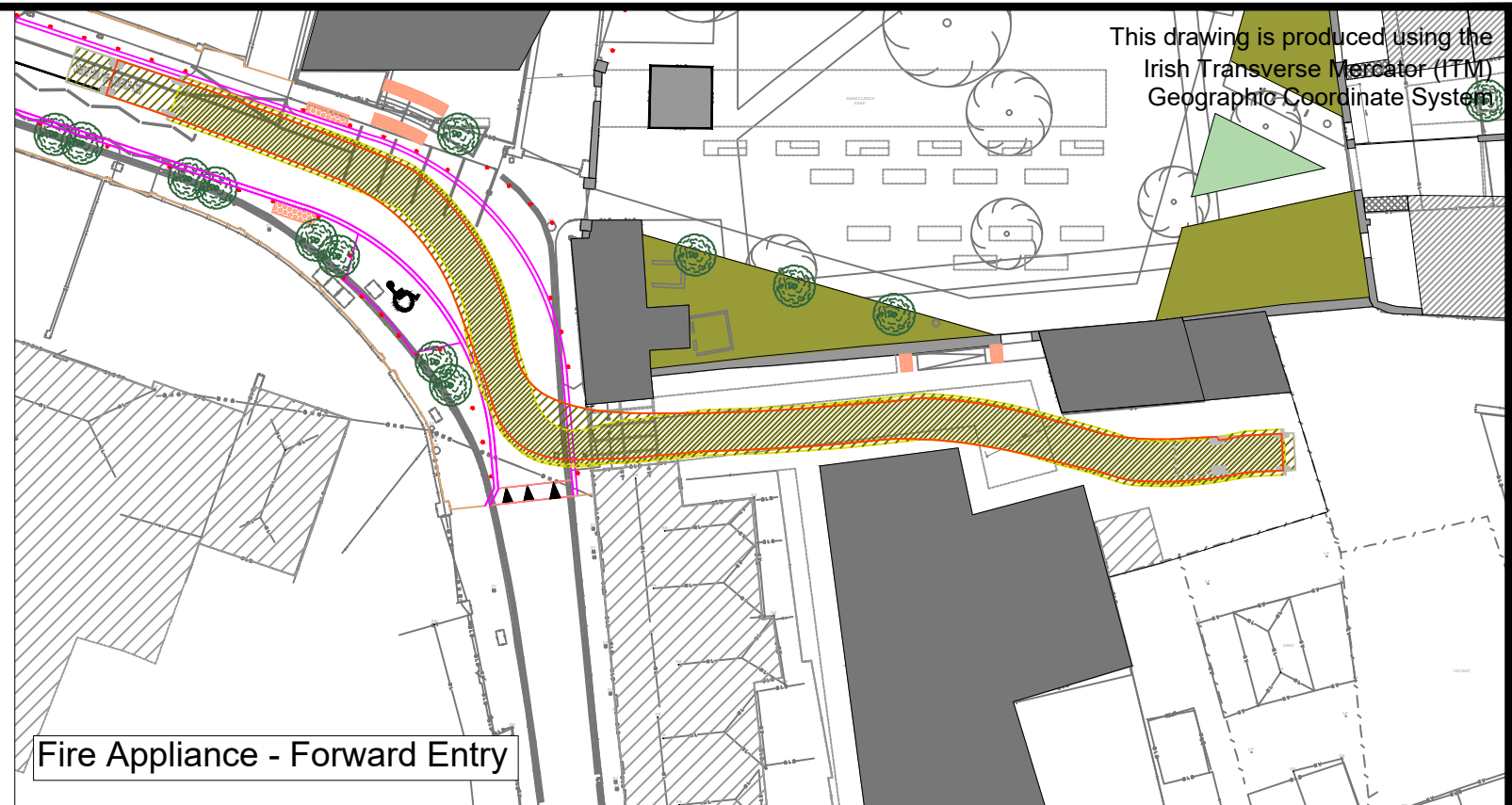


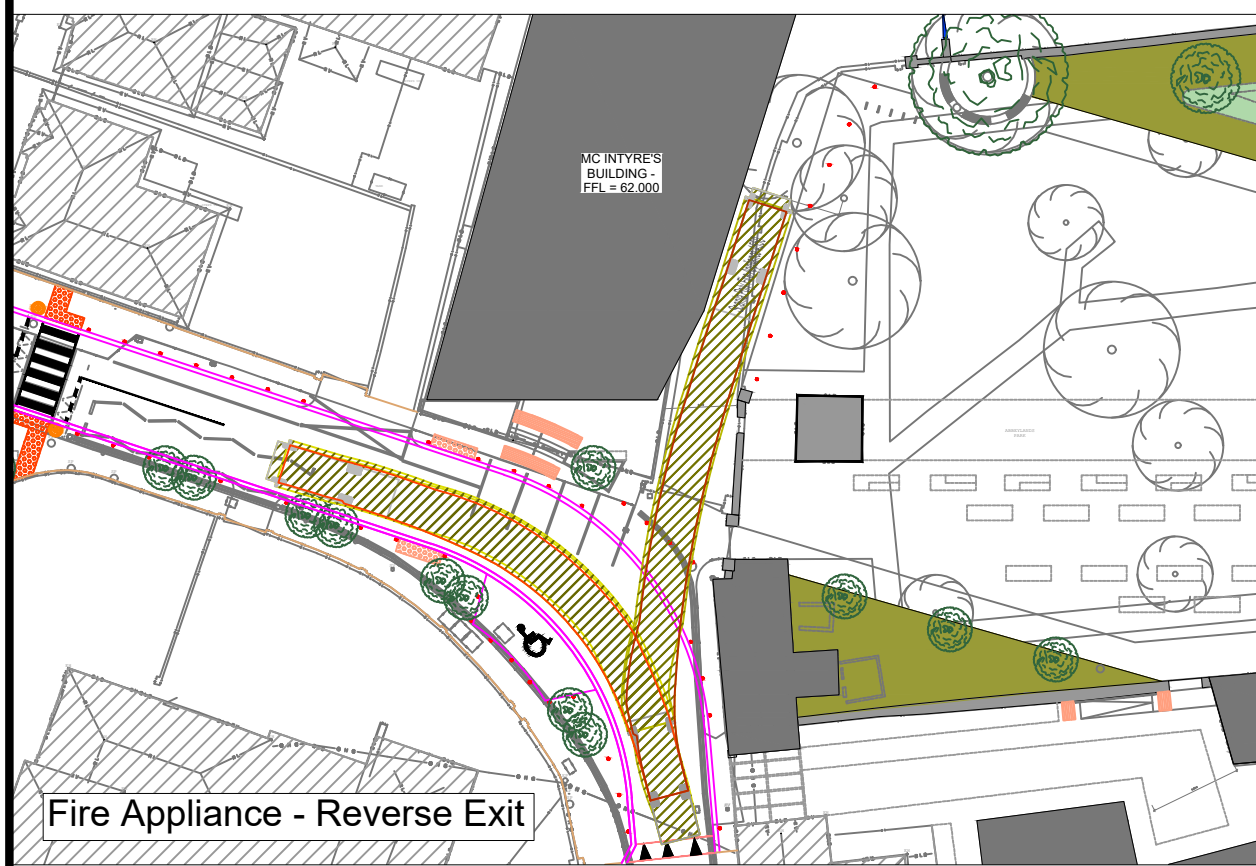
This drawing is produced using the Irish Transverse Mercator (ITM) Geographic Coordinate System



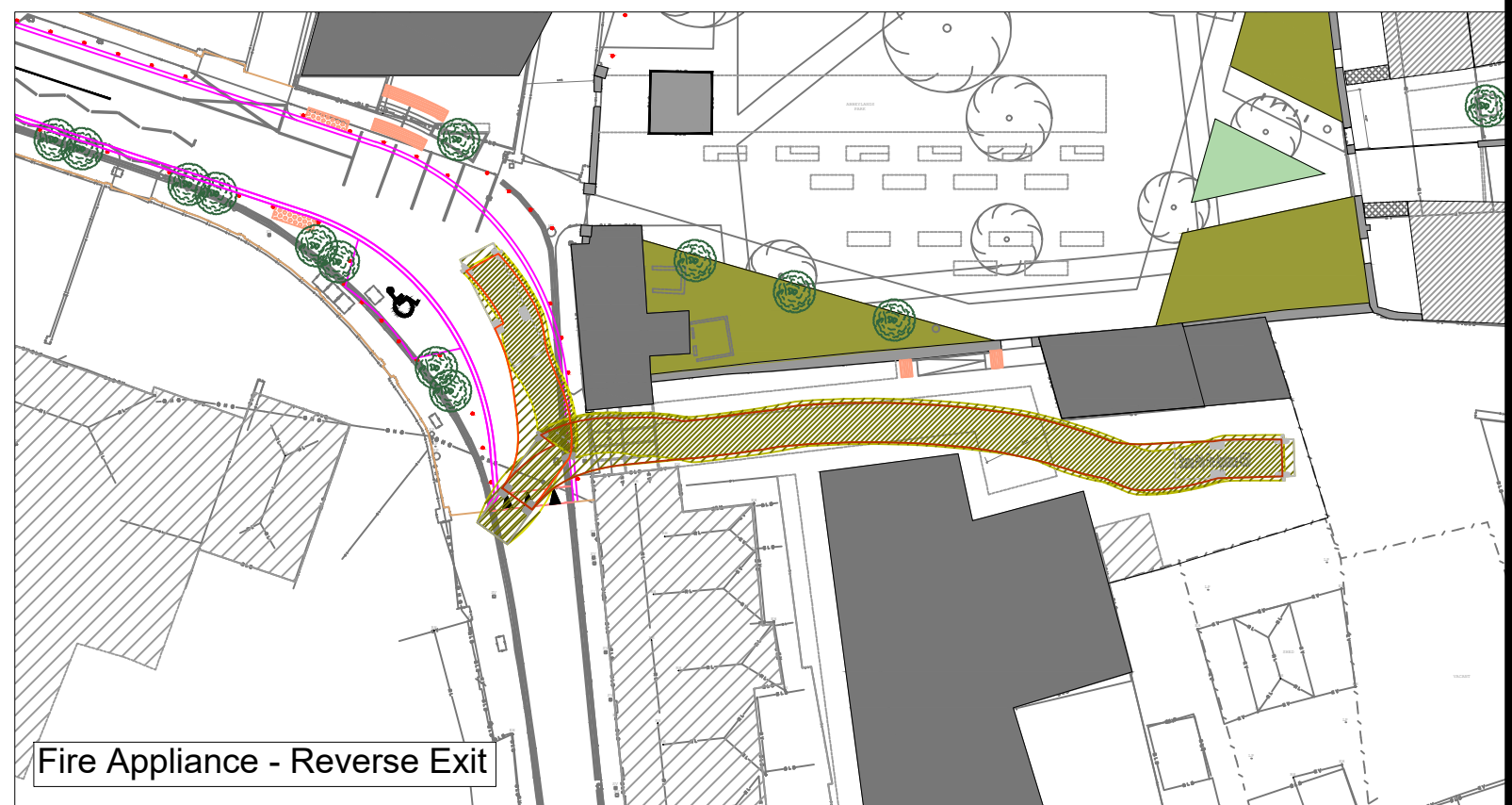
Fire Appliance - Forward Entry



Fire Appliance - Forward Entry



Fire Appliance - Reverse Exit



Fire Appliance - Reverse Exit

Scania Poly Fire Appliance	
Overall Length	8.400m
Overall Width	2.600m
Overall Body Height	3.550m
Min Body Ground Clearance	0.435m
Track Width	2.600m
Lock-to-lock time	6.00s
Curb to Curb Turning Radius	7.910m

OSI Licence No.: EN 0042422 © OSI/GOVERNMENT OF IRELAND A3 - © CSEA 2022 - Rev 00

Clifton Scannell Emerson
Associates

Project	Abbeylands Public Realm				
Dwg. Title	Vehicle Movements - Fire Appliance				
Drawn By	KF	Checked by	CP	Scale	1:500 @ A3
				CSEA Job No.	19_134
				Date	05-10-2022
Dwg. Progress	For Information			Dwg. No.	19_134-CSE-GEN-XX-SK-C-1014