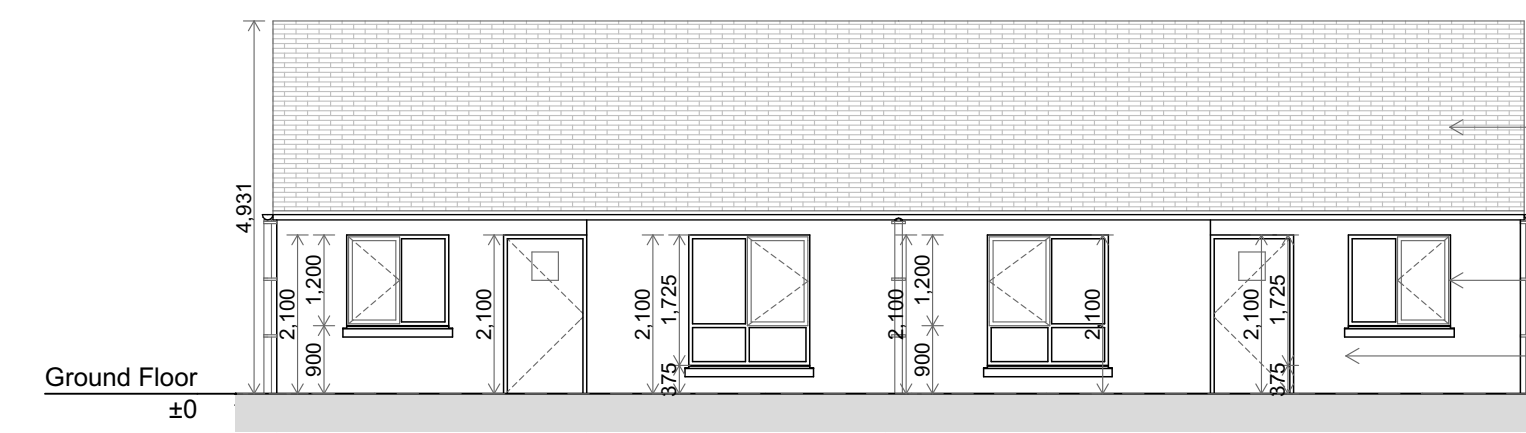


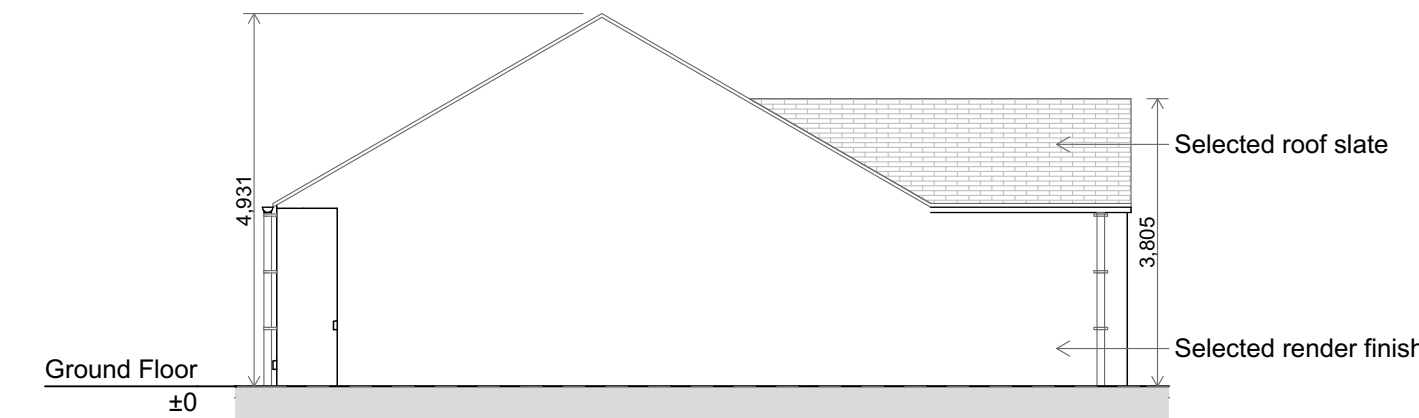
Ground Floor

1:50



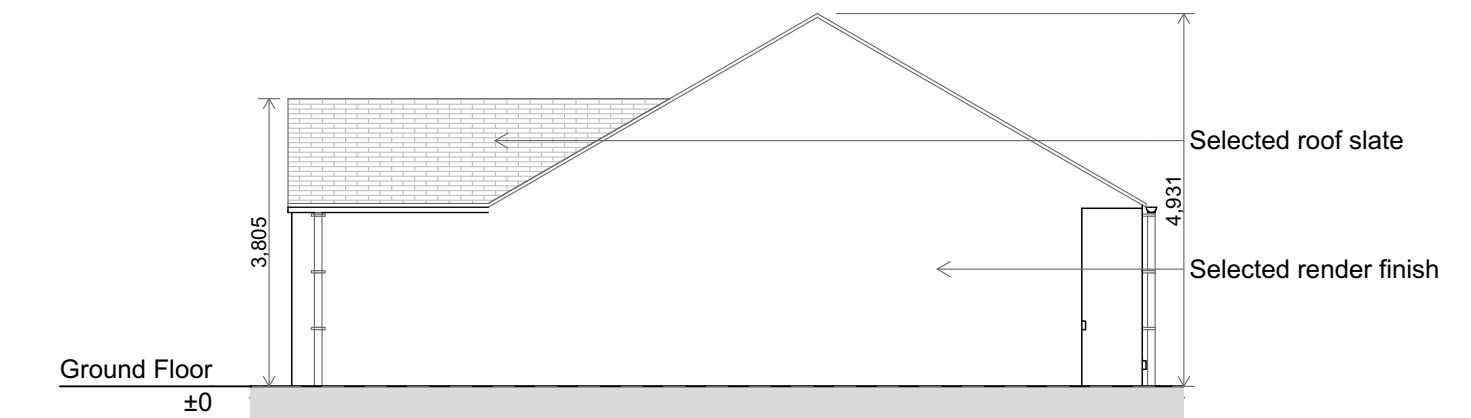
Front Elevation

1:100



Side Elevation

1:100



Side Elevation

1:100

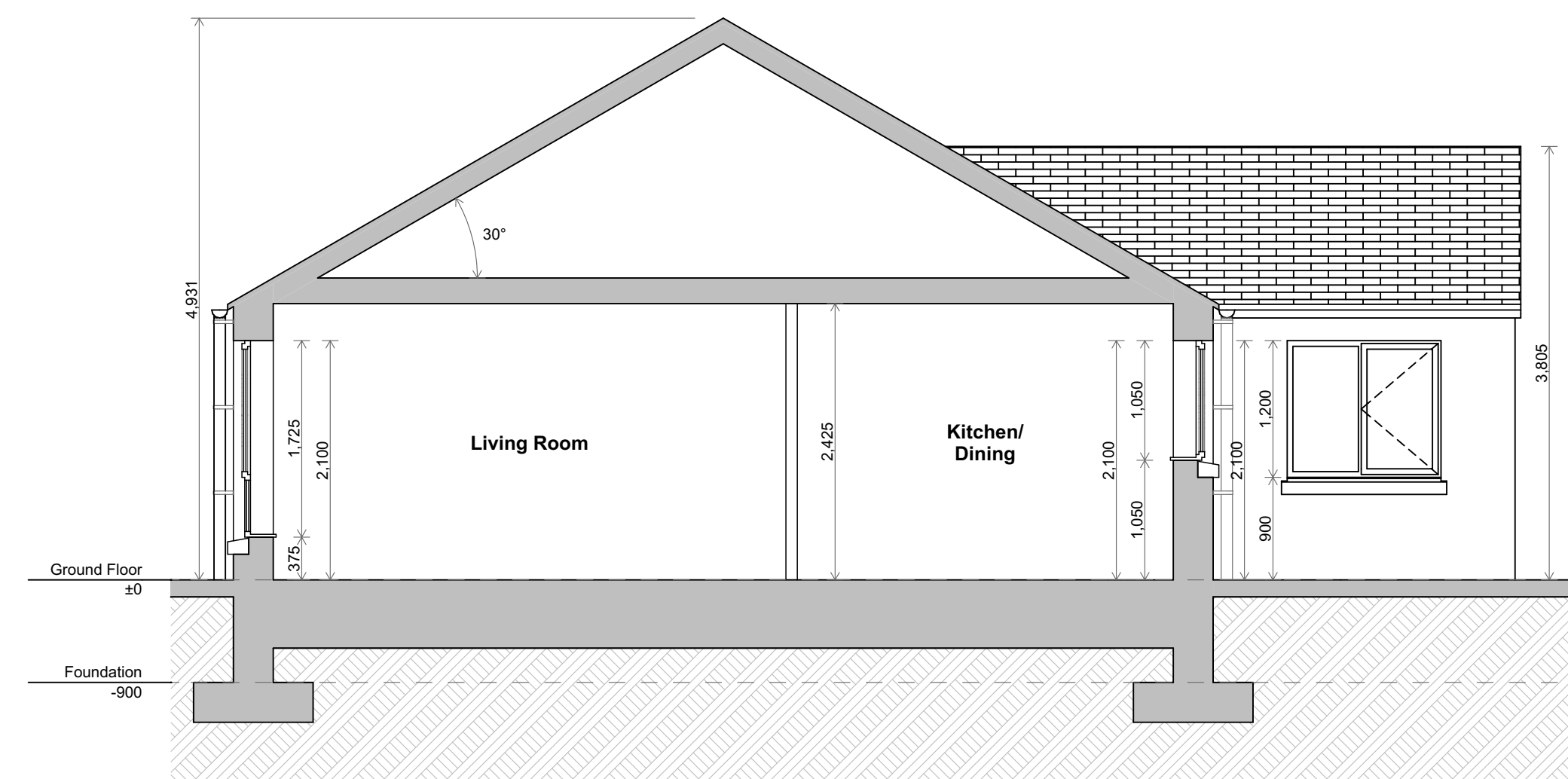


Rear Elevation

1:100

1

4



Section A-A

1:50

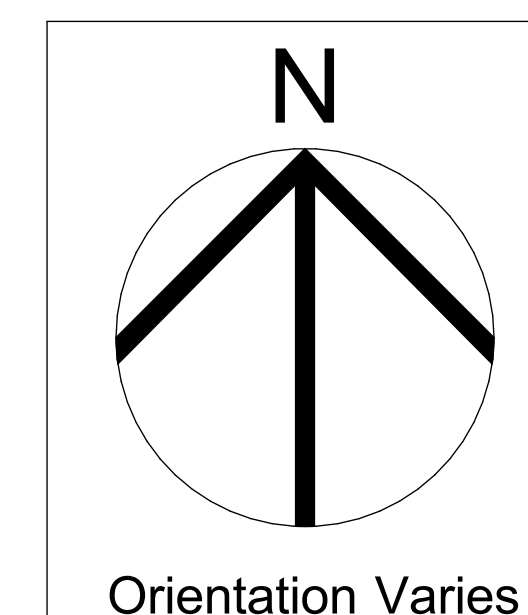


Section B-B

1:50

6

7



House Type B - 2 Bed/3 Persons		
Room Name	Area (m ²)	Min. Area (m ²)
Bedroom 1	13.0	13.0
Bedroom 2	7.3	7.1
Hall	9.0	
Living Area	28.4	28.0
Store	3.0	3.0
Wetroom	5.3	

Note
Min. Area (m²) from "Quality Housing For Sustainability Communities" Document.

House Type 'B'	
2 Bed 3 Persons	
<u>Floor Area</u>	
Ground Floor Area	68.2m ² / 734.1ft ²
Total Floor Area	68.2m ² / 734.1ft ²



REV	DATE	DESCRIPTION	APPROVED

Wynne Gormley Architects & Surveyors Ltd. Gilsenan

© WGG ARCHITECTS & SURVEYORS LTD. COPYRIGHT RESERVED.
JOB DETAILS
Housing Development at Kinnypottle, Cavan Town, Co. Cavan for Cavan County Council

Scale (to A1)	Dwg.no	Amend.
1:50, 1:100, 1:1	PL 20-040-120	
Date	Description	
30/07/2020	Planning - House Type 'B' - Floor Plan, Elevations & Sections	
Drawn by	John McDermott	
Checked by	Enda Gilsenan	

21, Church View, Cavan
T +353 49 43 61096
F +353 49 43 62907
E info@wggarchitects.com
W www.wggarchitects.ie

