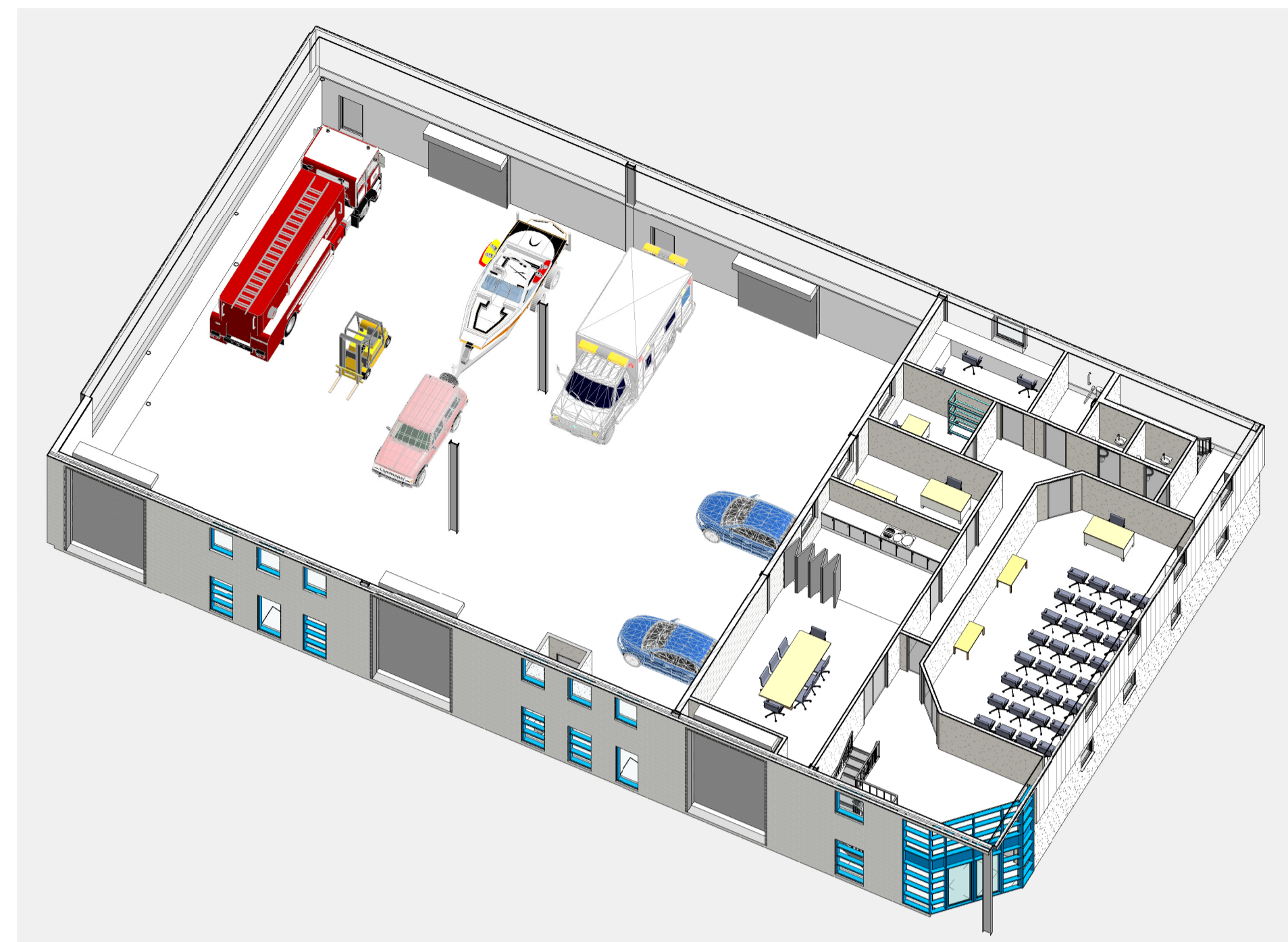


**PROPOSED GL FLOOR AREAS**

Name	Level	Area
OFFICE	GRD FFL	13 m <sup>2</sup>
STORE	GRD FFL	3 m <sup>2</sup>
DRYING ROOM	GRD FFL	12 m <sup>2</sup>
STORE	GRD FFL	69 m <sup>2</sup>
VEHICLE STORAGE	GRD FFL	463 m <sup>2</sup>
STAIRWELL	GRD FFL	10 m <sup>2</sup>
CANTEEN	GRD FFL	13 m <sup>2</sup>
CORRIDOR	GRD FFL	32 m <sup>2</sup>
LOBBY	GRD FFL	15 m <sup>2</sup>
CLEANERS	GRD FFL	6 m <sup>2</sup>
CORRIDOR	GRD FFL	9 m <sup>2</sup>
Dis Wc / Sh	GRD FFL	6 m <sup>2</sup>
Male	GRD FFL	13 m <sup>2</sup>
F.Male	GRD FFL	13 m <sup>2</sup>
Wc	GRD FFL	2 m <sup>2</sup>
Wc	GRD FFL	2 m <sup>2</sup>
Grand total:	16	679 m <sup>2</sup>

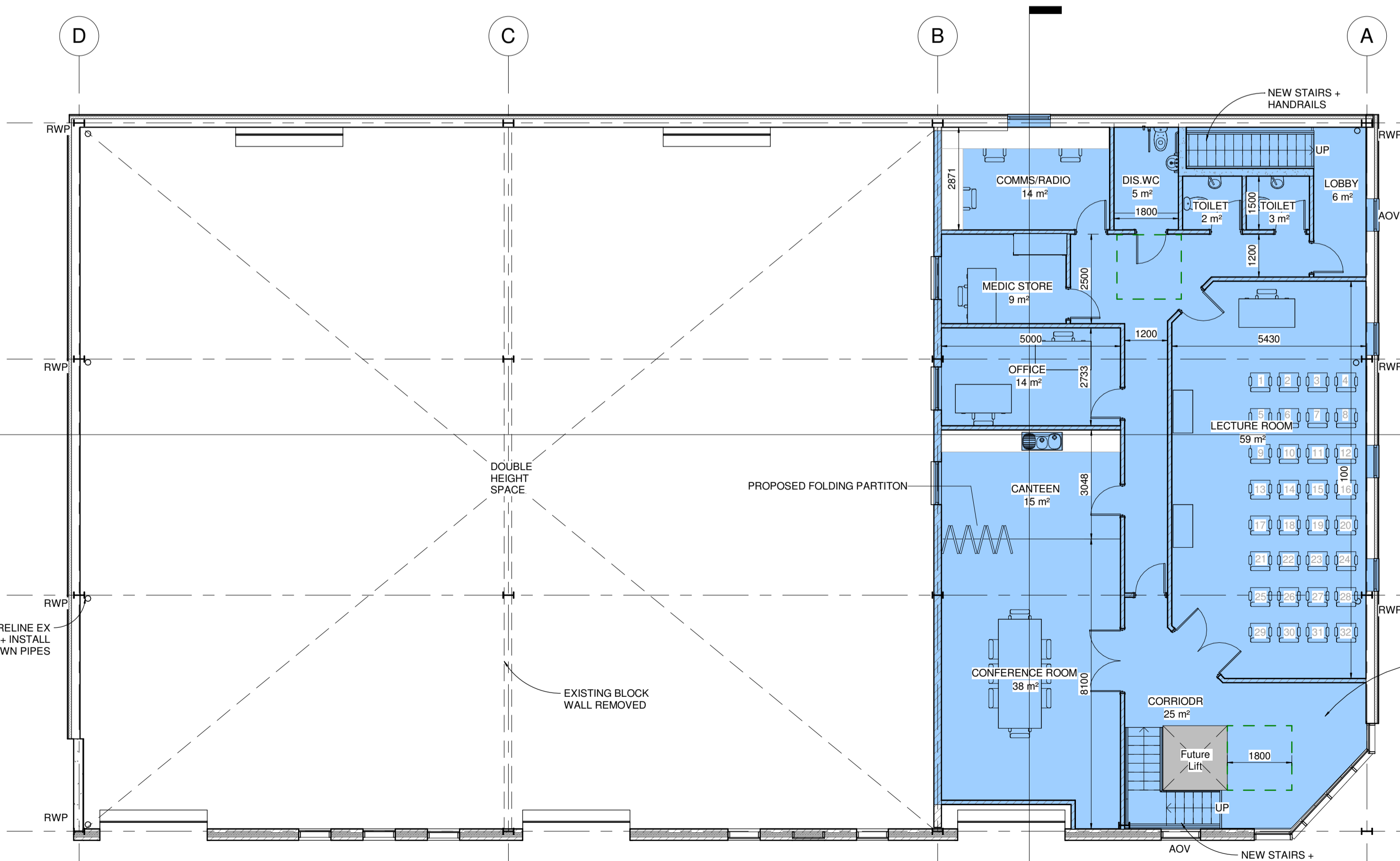
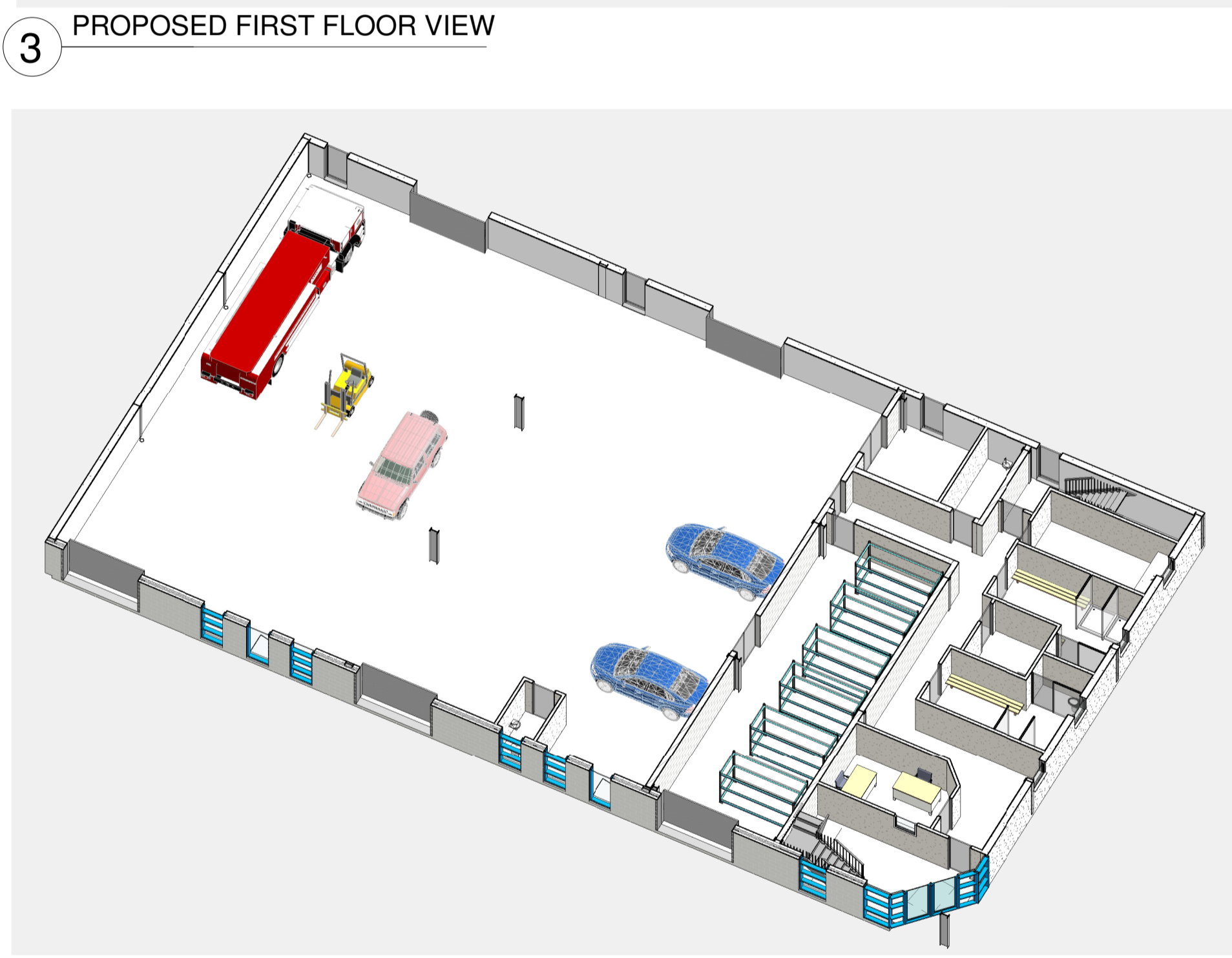


**OUTLINE SPECIFICATION**

NEW R.C. FOUNDATIONS UNDER NEW WALLS AND STEEL COLUMNS.  
NEW EXTERNAL ALUMINUM WINDOWS AND DOORS TO MATCH EXISTING.  
EX CONCRETE GROUND FLOOR SLAB WITH NEW TIMBER/CONCRETE FIRST FLOOR SUPPORTED OFF NEW STEEL FRAME.  
RELINE ALL EXISTING GUTTERS + PROVIDE NEW INTERNAL DOWNPIPES.  
NEW M+E DESIGN TO BE AGREED - LIGHTS, POWER, DATA VENTILATION SANITARYWARE ETC.  
ALL FIXTURES + FINISHES BY CAVAN CIVIL DEFENCE.  
ALL NEW FINISHES TO MATCH EXISTING  
ALL LEVELS RELATE TO F.F.L. 100.00m

**PROPOSED FF FLOOR AREAS**

Name	Level	Area
LECTURE ROOM	1ST FFL	59 m <sup>2</sup>
TOILET	1ST FFL	3 m <sup>2</sup>
TOILET	1ST FFL	2 m <sup>2</sup>
DIS.WC	1ST FFL	5 m <sup>2</sup>
CORRIDOR	1ST FFL	25 m <sup>2</sup>
CANTEEN	1ST FFL	15 m <sup>2</sup>
LOBBY	1ST FFL	6 m <sup>2</sup>
MEDIC STORE	1ST FFL	9 m <sup>2</sup>
CONFERENCE ROOM	1ST FFL	38 m <sup>2</sup>
OFFICE	1ST FFL	14 m <sup>2</sup>
COMMS-RADIO	1ST FFL	14 m <sup>2</sup>
Grand total:	11	189 m <sup>2</sup>



**PROPOSED FF FLOOR AREAS**

Name	Level	Area
LECTURE ROOM	1ST FFL	59 m <sup>2</sup>
TOILET	1ST FFL	3 m <sup>2</sup>
TOILET	1ST FFL	2 m <sup>2</sup>
DIS.WC	1ST FFL	5 m <sup>2</sup>
CORRIDOR	1ST FFL	25 m <sup>2</sup>
CANTEEN	1ST FFL	15 m <sup>2</sup>
LOBBY	1ST FFL	6 m <sup>2</sup>
MEDIC STORE	1ST FFL	9 m <sup>2</sup>
CONFERENCE ROOM	1ST FFL	38 m <sup>2</sup>
OFFICE	1ST FFL	14 m <sup>2</sup>
COMMS-RADIO	1ST FFL	14 m <sup>2</sup>
Grand total:	11	189 m <sup>2</sup>

**NEW FIRST FLOOR (CONCRETE OR TIMBER) SUPPORTED OFF NEW STEEL FRAME**

NEW STAIRS + HANDRAILS

NEW STEEL COLUMNS + BEAMS TO SUPPORT NEW FIRST FLOOR

NEW EXTERNAL WINDOWS SHOWN THUS

NEW R.C. FOUNDATIONS UNDER NEW WALLS AND STEEL COLUMNS.

NEW EXTERNAL ALUMINUM WINDOWS AND DOORS TO MATCH EXISTING.

EX CONCRETE GROUND FLOOR SLAB WITH NEW TIMBER/CONCRETE FIRST FLOOR SUPPORTED OFF NEW STEEL FRAME.

RELINE ALL EXISTING GUTTERS + PROVIDE NEW INTERNAL DOWNPIPES.

NEW M+E DESIGN TO BE AGREED - LIGHTS, POWER, DATA VENTILATION SANITARYWARE ETC.

ALL FIXTURES + FINISHES BY CAVAN CIVIL DEFENCE.

ALL NEW FINISHES TO MATCH EXISTING

ALL LEVELS RELATE TO F.F.L. 100.00m



Rev	Date	Description	By
Revision Schedule			

**PART 8 PLANNING**

Project Name:  
**CAVAN CIVIL DEFENCE HQ**

Drawing Title:  
**FLOOR PLANS & 3D VIEWS - PROPOSED**

Client:  
Cavan County Council

**MALACHI CULLEN**  
CONSULTING ENGINEERS LTD

8 CENTRE COURT, BLYRY BUSINESS & COMMERCIAL PARK, ATHLONE, CO. WESTMEATH  
ph: 090 642 0364 info@mcullen.ie www.mcullen.ie

Scale:	Size:	Project no:	Sheet no:	Rev:
1 : 100	A1			
Date: MAY 2021	<b>20-073</b>		<b>P004</b>	
Dr: DR	Chk: JJD			