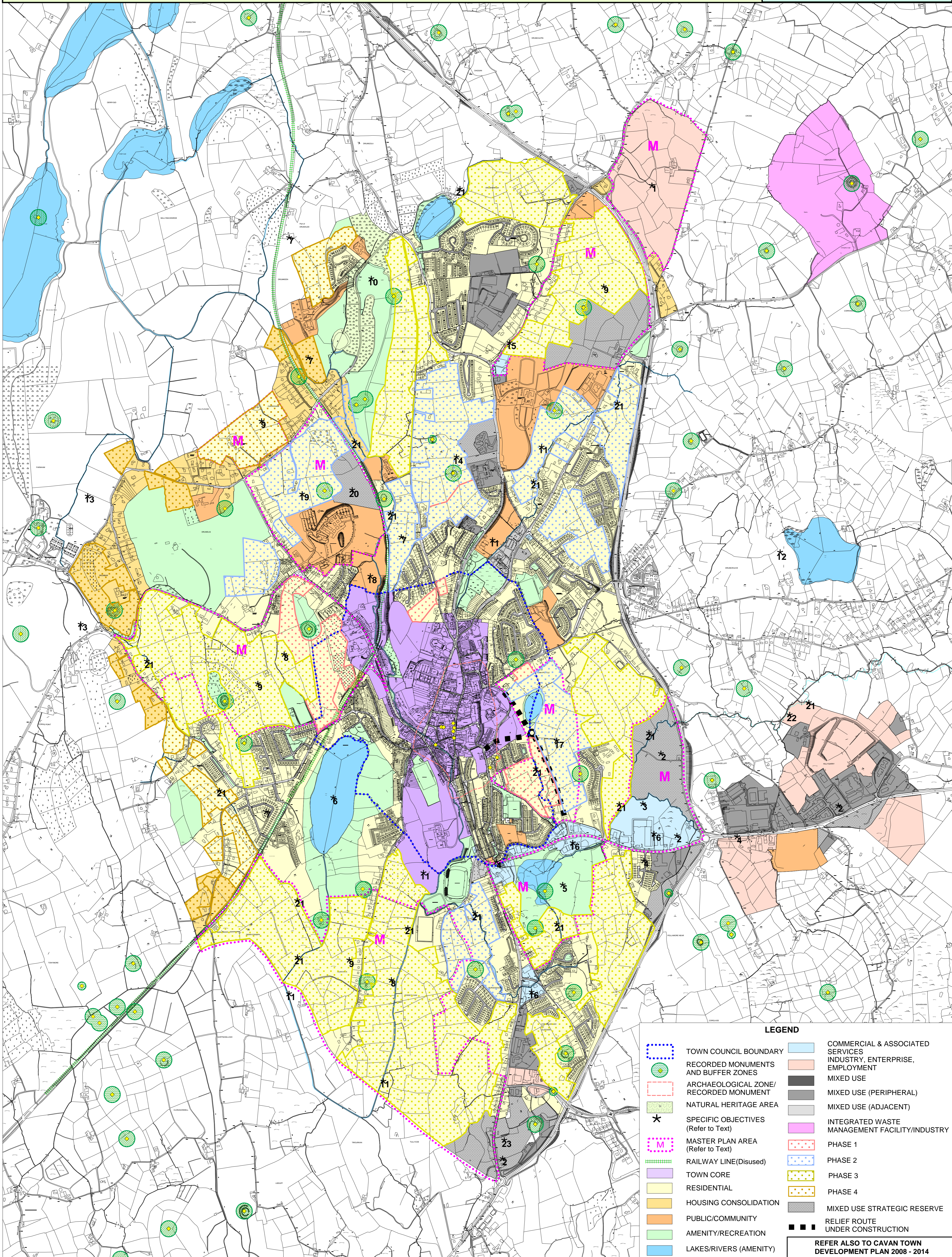




CAVAN TOWN AND ENVIRONS DEVELOPMENT PLAN 2008 - 2014

VARIATION NO 1 PHASING MAP

Co. Manager	Mr. Jack Keyes
Director of Service	Mr. Ger Finn
A/Senior Planner	Ms. Marice Galligan
Mapping	Mr. Brian Allen
Date	October 2011
Map	Not to scale



LEGEND

- TOWN COUNCIL BOUNDARY
- RECORDED MONUMENTS AND BUFFER ZONES
- ARCHAEOLOGICAL ZONE/ RECORDED MONUMENT
- NATURAL HERITAGE AREA
- SPECIFIC OBJECTIVES (Refer to Text)
- MASTER PLAN AREA (Refer to Text)
- RAILWAY LINE(Disused)
- TOWN CORE
- RESIDENTIAL
- HOUSING CONSOLIDATION
- PUBLIC/COMMUNITY
- AMENITY/RECREATION
- LAKES/RIVERS (AMENITY)
- COMMERCIAL & ASSOCIATED SERVICES
- INDUSTRY, ENTERPRISE, EMPLOYMENT
- MIXED USE
- MIXED USE (PERIPHERAL)
- MIXED USE (ADJACENT)
- INTEGRATED WASTE MANAGEMENT FACILITY/INDUSTRY
- PHASE 1
- PHASE 2
- PHASE 3
- PHASE 4
- MIXED USE STRATEGIC RESERVE
- RELIEF ROUTE UNDER CONSTRUCTION

REFER ALSO TO CAVAN TOWN DEVELOPMENT PLAN 2008 - 2014