

# CAVAN TOWN DEVELOPMENT PLAN 2008 - 2014

## VARIATION NO 1 PHASING MAP

Co. Manager	Mr. Jack Keyes
Director of Service	Mr. Frank Gibbons
A/Senior Planner	M/s Marice Galligan
Mapping	LEGEND Mr. Brian Allen
Date JULY 2011	Map Not to Scale

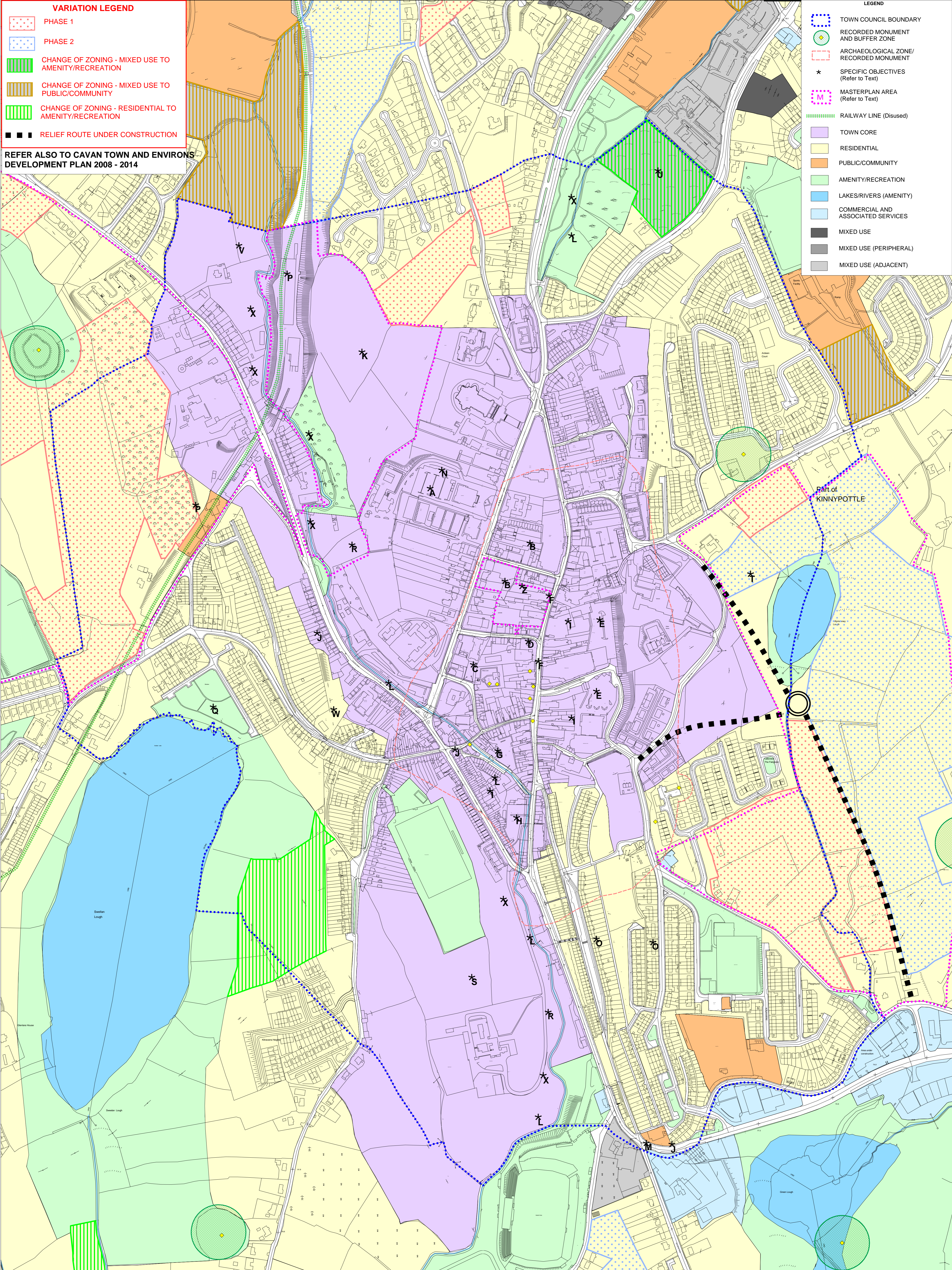
**VARIATION LEGEND**

- PHASE 1
- PHASE 2
- CHANGE OF ZONING - MIXED USE TO AMENITY/RECREATION
- CHANGE OF ZONING - MIXED USE TO PUBLIC/COMMUNITY
- CHANGE OF ZONING - RESIDENTIAL TO AMENITY/RECREATION
- RELIEF ROUTE UNDER CONSTRUCTION

REFER ALSO TO CAVAN TOWN AND ENVIRONS DEVELOPMENT PLAN 2008 - 2014

**LEGEND**

- TOWN COUNCIL BOUNDARY
- RECORDED MONUMENT AND BUFFER ZONE
- ARCHAEOLOGICAL ZONE/ RECORDED MONUMENT
- SPECIFIC OBJECTIVES (Refer to Text)
- MASTERPLAN AREA (Refer to Text)
- RAILWAY LINE (Disused)
- TOWN CORE
- RESIDENTIAL
- PUBLIC/COMMUNITY
- AMENITY/RECREATION
- LAKES/RIVERS (AMENITY)
- COMMERCIAL AND ASSOCIATED SERVICES
- MIXED USE
- MIXED USE (PERIPHERAL)
- MIXED USE (ADJACENT)



Part of KINNYPOTTLE