

SHERCOCK

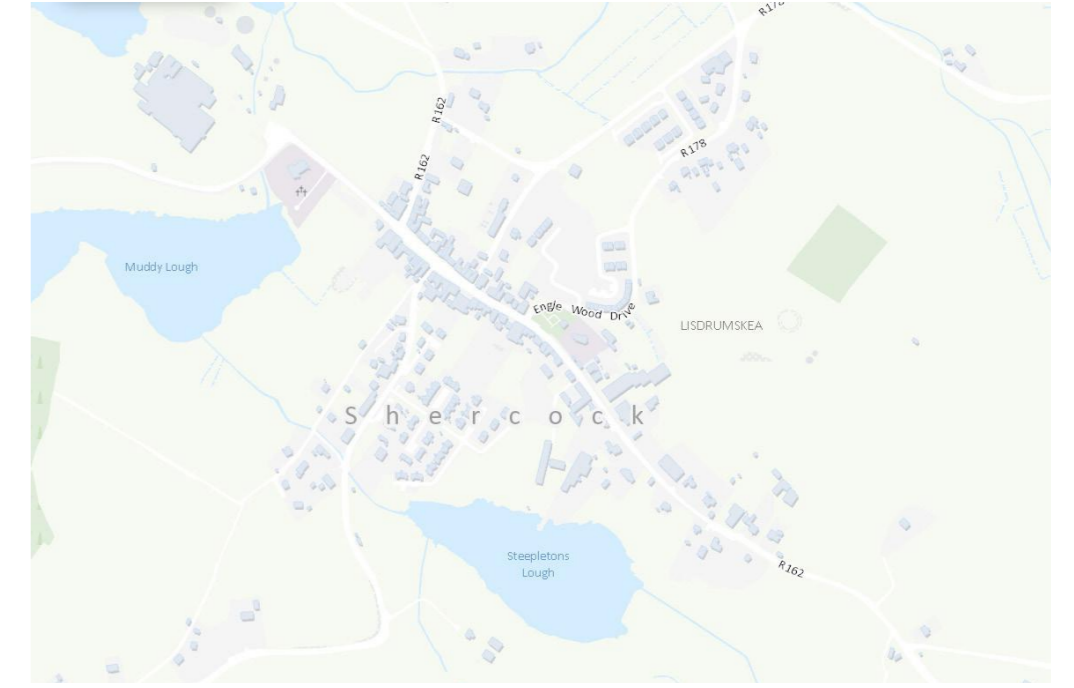
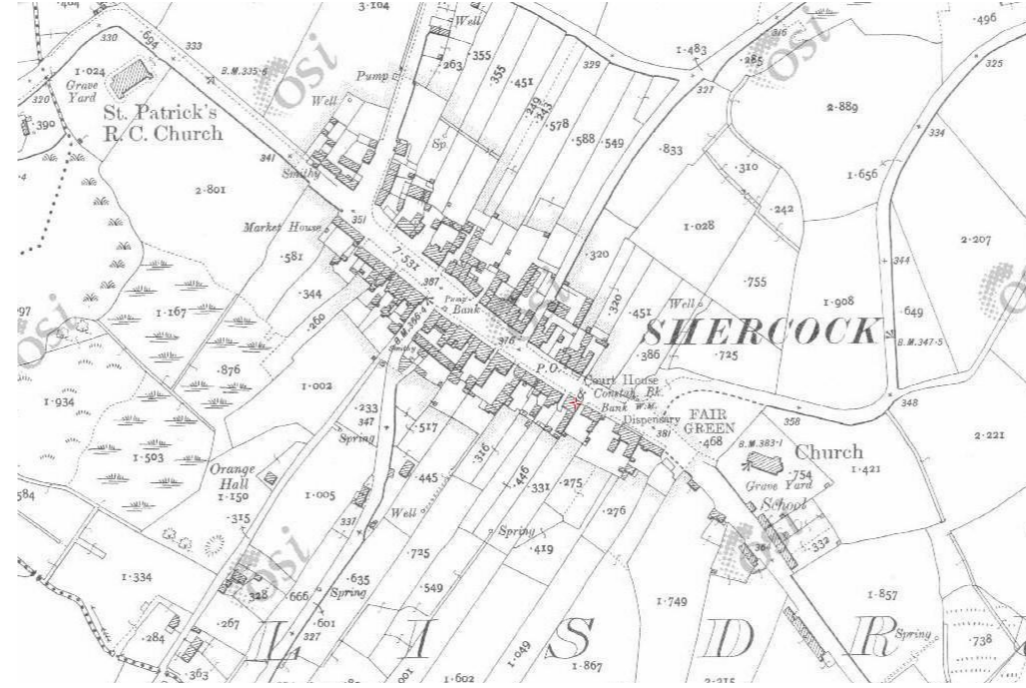
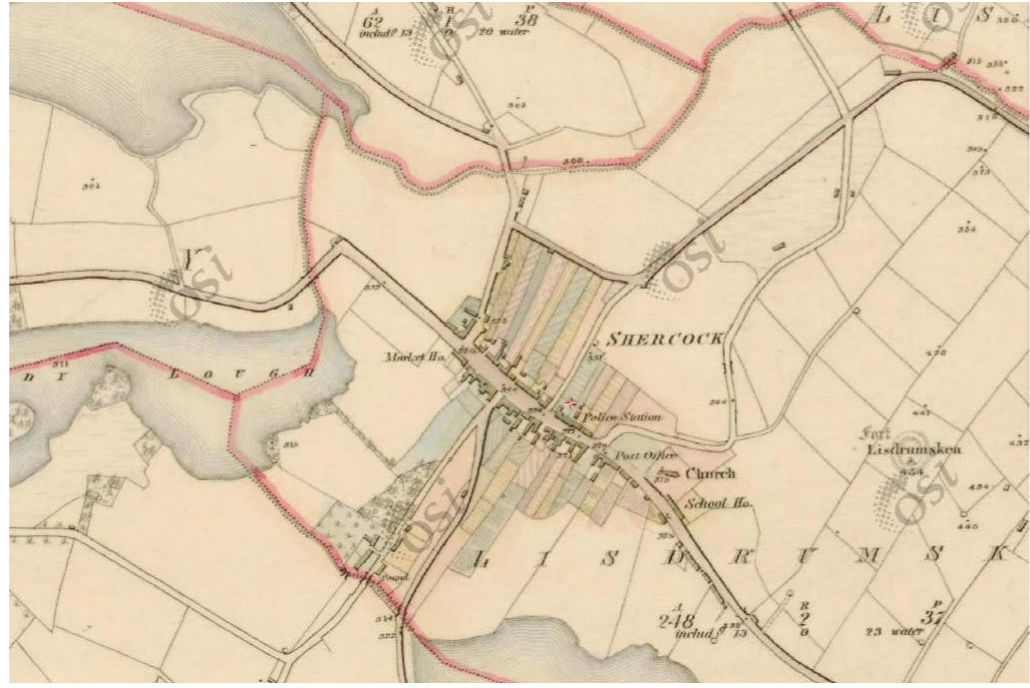


Revitalising Cavan's Towns and Villages

History

The town was founded in the early 17th century as a plantation village to accommodate mainly Presbyterian British settlers who colonised this part of County Cavan.

By the mid-19th century the village and immediate area had a population of about 5,000. However, the great famines and subsequent emigration affected the county of Cavan, reducing the population by 50% between 1841 and 1891.



Maps from 1800, 1900 and 2017



Precedents



Pedestrian and cycle streets



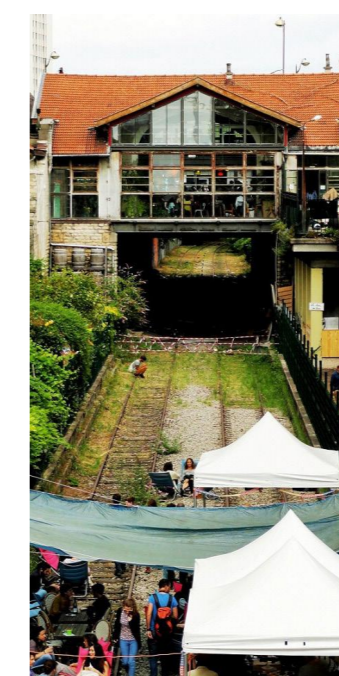
Opportunity to use local materials e.g. limestone to upgrade public realm



Use of native species in landscaping



Opportunity to refurbish industrial heritage



Opportunity to create a leisure space along Moyalty River

Constraints

W

Weaknesses

- 1 // The surrounding natural assets in the form of Lough Steepletons, Lough Sillan and Muddy Lake do not lend themselves to ease of access for the town.
- 2 // Employment enterprises are pepper potted through the town instead of forming a consolidated zone which could cater to the requirements more efficiently and secure the quality of residential development in the town.

T

Threats / Challenges

- 3 // Edges of the lake that can form good public spaces are not accessible
- 4 // Shercock Church on Church Street with parking area needs improvements in terms of access and public realm



Lough Sillan



Consolidation of Employment land uses



Inaccessible bank along the lake



Shercock Church

Opportunities

S

Strengths

- 1 // Existing employment landuses around the town are indicative of its strategic location and also potential to grow.
- 2 // The Natural Assets in the form of surrounding three lakes should be capitalised on and provide an integrated offer for the towns residents and tourists alike

O

Opportunities

- 3 // Public Realm improvements around St. Patricks Church and Shercock Church can provide opportunity to highlight these are landmarks in the town
- 4 // Lough Steepletons can be made more accessible as a water-body that connected to the town.



Existing employment landuses



Existing natural assets



Shercock Church as a visible landmark



Lough Steepletons