

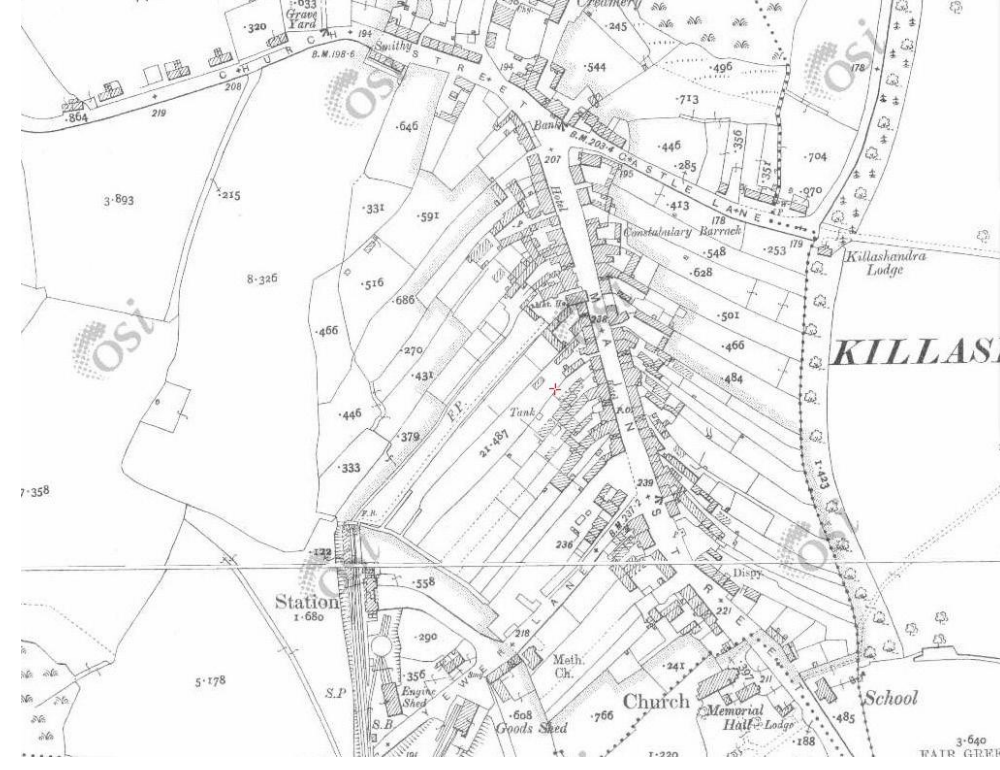
KILLESHANDRA

Revitalising Cavan's Towns and Villages



History

Killeshandra owes its origins to the Ulster Plantation, when Sir Alexander Hamilton of Innerwick was granted lands in 1610 to build a castle and create a Protestant community. During the 17th and 18th centuries, Killeshandra was a market town and its hinterland was a major place for linen and flax production. It then became well-known for its creamery industry in the 19th century. The town was once the terminus of a branch railway line between Cavan and Crossdoney. The line closed in 1960.



Killeshandra in 1800, 1900 and 2017



Precedents



Pedestrian and cycle streets



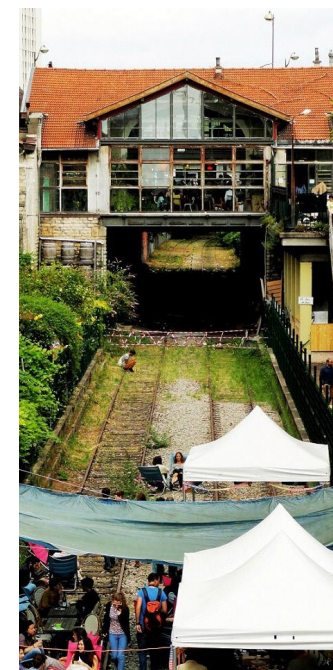
Opportunity to use local materials e.g. limestone to upgrade public realm



Use of native species in landscaping



Opportunity to refurbish industrial heritage



Opportunity to create a leisure space along Town Lake

Constraints

W

- 1 // Invasive on-street parking notably due to Lakeland Dairies staff and visitors
- 2 // A number of empty and abandoned properties

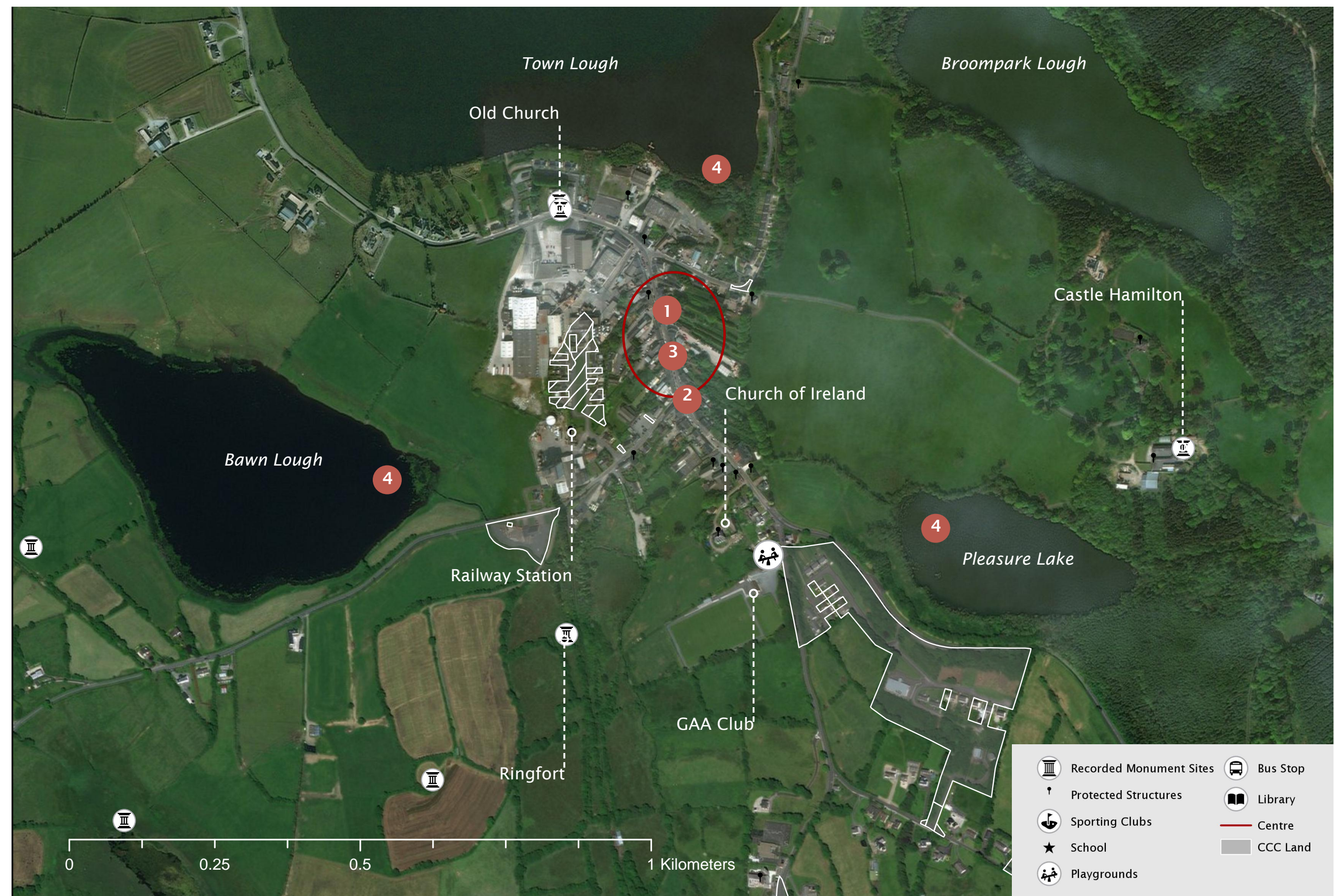
Weaknesses

- 2 // Retail business has declined severely in Killeshandra. The town has recently lost its bank and credit union
- 3 // Plastic signage in the streets jeopardise the traditional character of the town
- // Lavatories by the lake have been vandalised and in a tired condition

T

Threats / Challenges

- // Some American style boundary-less gardens residences and new developments threaten the character of the town
- 4 // Angling has declined in recent years, further threatening the vitality of the town



Invasive on-street parking



Abandoned premises on the Main Street



Plastic signage on the street should be replaced with traditional signage



Angling has declined in recent years

Opportunities

S

Strengths

- 1 // The town has maintained its unique charm and character with a linear rural settlement pattern, long rear gardens and agricultural scenery of rolling hills and lakes
- 2 // The town benefited from recent public realm investment: Main Street resurfacing, new pavement on the footpaths, creation of pedestrian crossing points

// Well maintained landscaped areas with numerous native species and wildflower meadows

- 3 // Streetscape: buildings are in good condition and well-maintained

// Significant County Cavan tourist destination for anglers, walkers and wildlife enthusiasts.

O

Opportunities

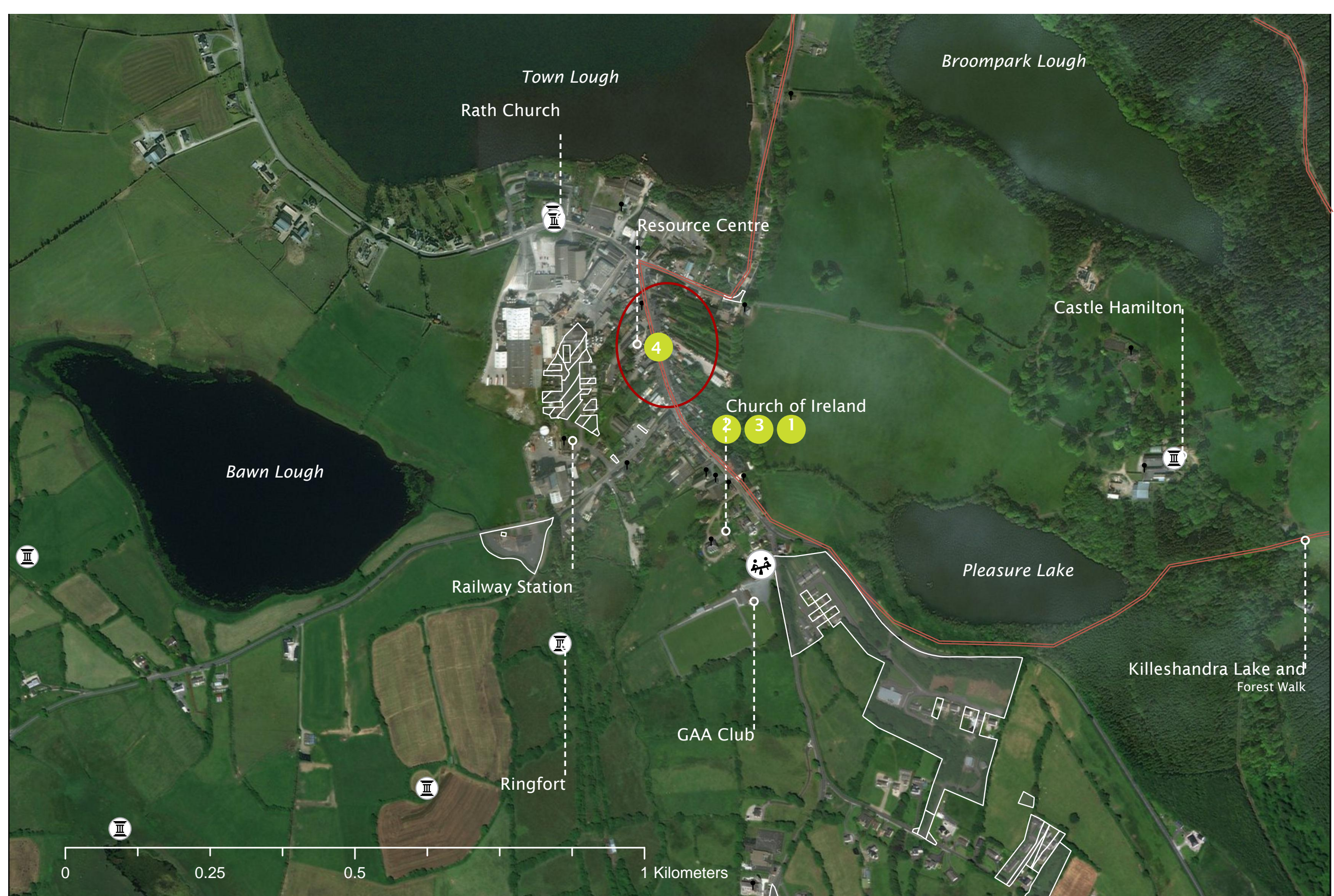
// Encourage the development of ecotourism through: sustainable and traditional management practices of landscaped areas, restore shopfronts in a traditional manner, provide new tourism activities related to wildlife and nature, build upon existing ecofriendly initiatives such as the Men's Shed up-cycling and craft centre, provide further planting

- 4 // Opportunity to develop an attractive public square - further planting, provision of seats etc - by the Resource Centre

// Add pedestrian/cycle linkage to Killykeen Forest

// Opportunity to create a visitor information centre and café in the railway shed

// Study the opportunity to reintroduce the linen production as a high value and heritage rich product



The Main Street



Recent public realm investment with the introduction of pedestrian crossing point and new pavement



Buildings are well-maintained with a preserved traditional character



The square by the Resource Centre