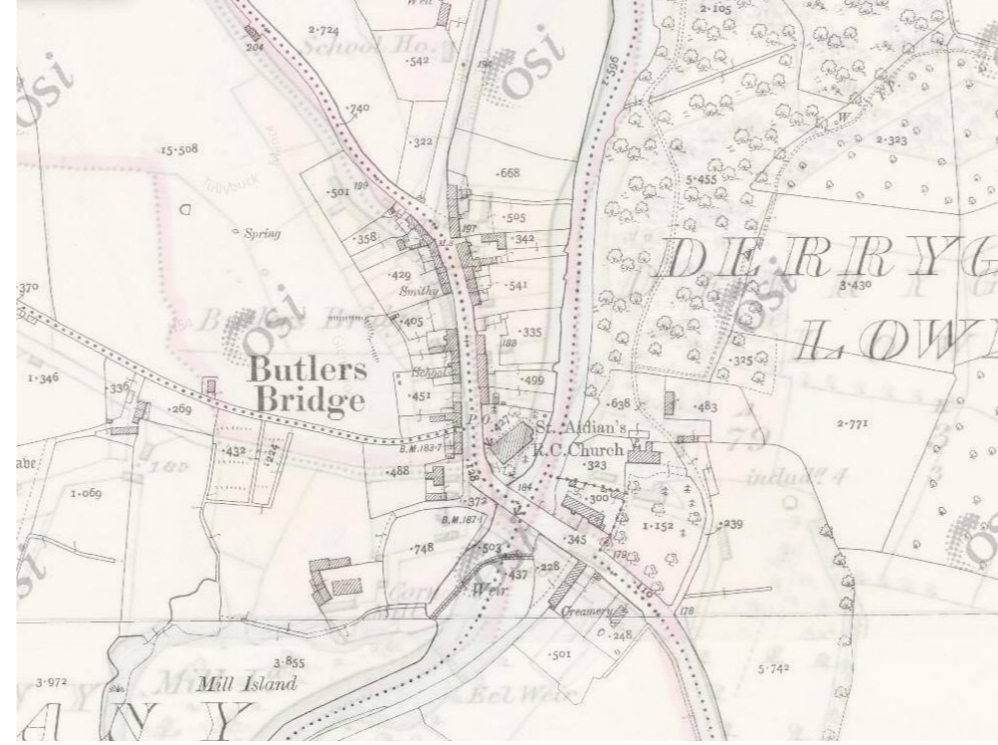
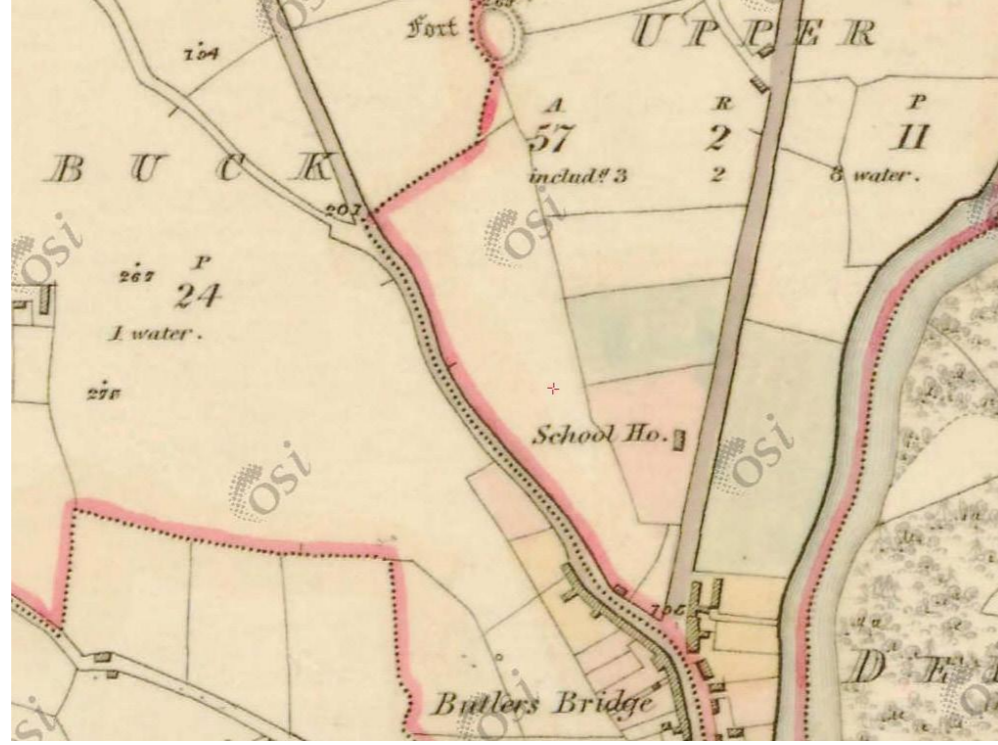


# BUTLERSBRIDGE

## Revitalising Cavan's Towns and Villages

### History

Butlersbridge Church, a.k.a. Seipeal Droichead an Bhuitléirigh, the church of St. Aidan was built between 1861 and 1863 on a site given free by the Earl of Lanesboro. It is situated on the Annalee River. The church was dedicated on 14 June 1863 by Bishop James Browne. The architect was William Hague Jnr whose family came from the nearby townland of Plush.



Maps of Butlersbridge in 1800, 1900 and 2017



### Precedents



Opportunity to create pedestrian friendly street



Opportunity to strengthen heritage value



Opportunity to improve public realm with local materials and plant species



Opportunity to re-purpose abandoned buildings



Opportunity to provide cycle amenities

## Constraints

# W

### Weaknesses

- 4 // Invasive on-street parking
- 1 // Some buildings are in need of repainting or refreshment
- 2 // Existing unsympathetic new developments
- 3 // Pedestrian un-friendly public realm
- // Lack of services and retail for a growing village
- // Commuter town lacking community and civic activities
- // High speed on approach roads without traffic calming features

# T

### Threats / Challenges

- // Rising population putting pressure on housing development and infrastructure



1 Several properties are in need of refreshment



2 Unsympathetic development threatening the character of the village



3 Pedestrian un-friendly public realm



4 Invasive on street parking

## Opportunities

# S

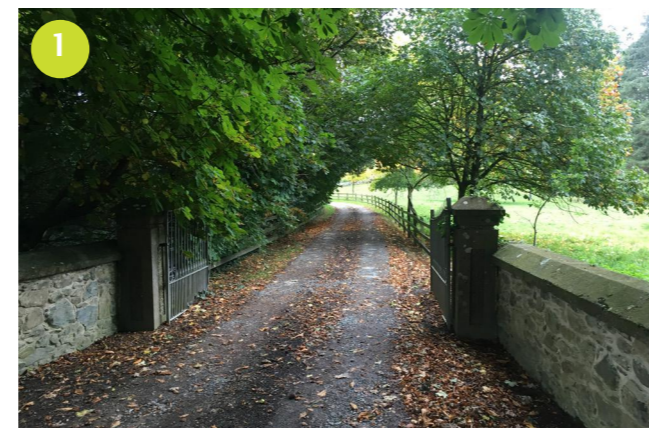
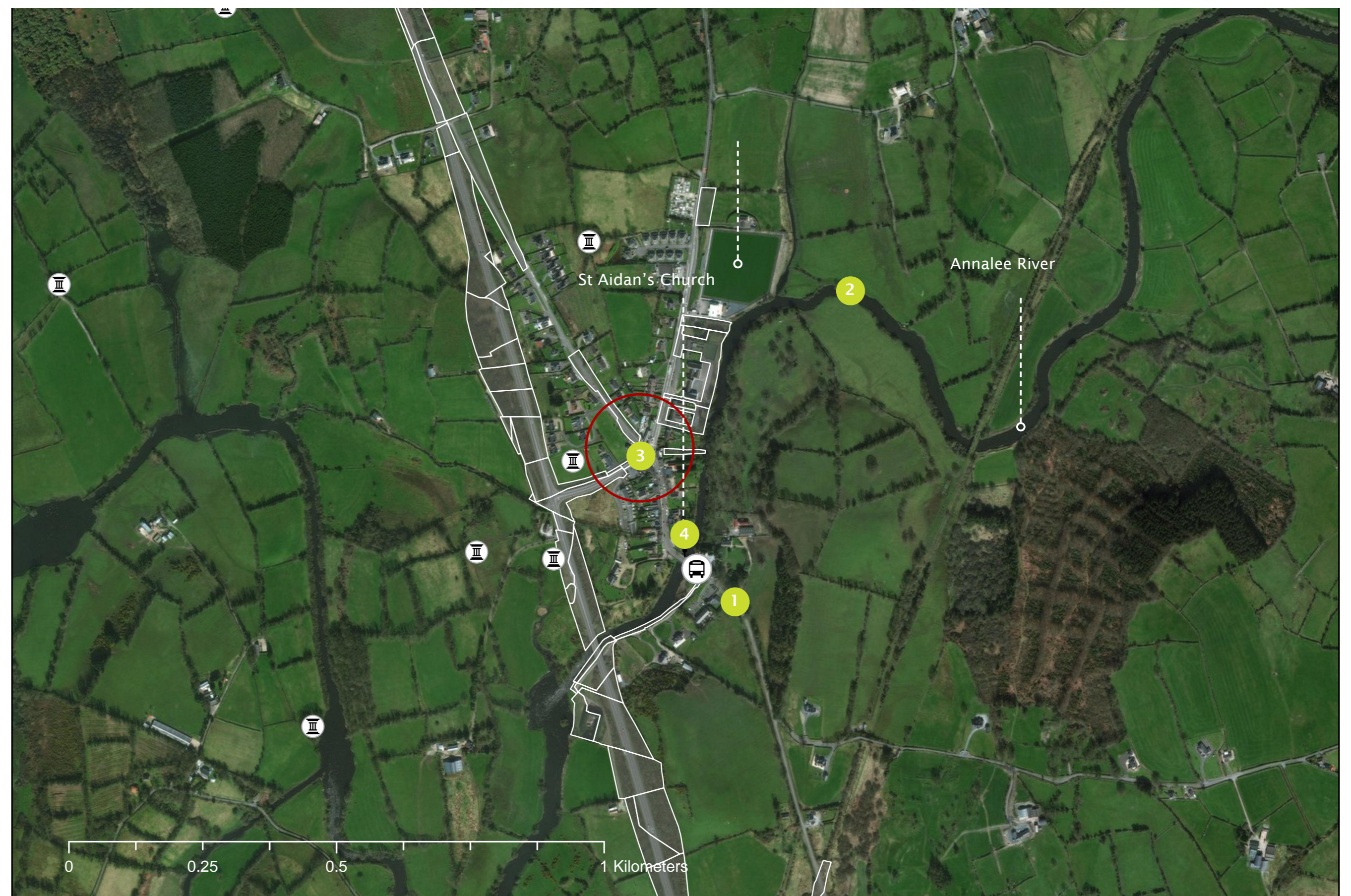
### Strengths

- // Proximity to Cavan
- // Offer a good alternative for those who wish to live in a rural area in commuting proximity of urban centres
- 1 // Strong countryside character
- 3 // Well maintained buildings
- 2 // Close to several designated natural sites and recreational spaces: Annagh Lake, Drumkeen House Woodlands, Lough Oughter, Annalee River
- // Close to the scenic viewing points of Derrygid and Drumcalpin
- 2 // Good leisure and tourism offer: Butlersbridge Riverside Walk, canoe centre, angling sites
- 4 // Several well-maintained protected structures: St. Aidan's Roman Catholic Church. In particular, St Aidan's Church is one of the several fine churches in the diocese designed by the architect William Hague Jr

# O

### Opportunities

- // Benefits from the services of Cavan Town such as hotels, equestrian centre, shops, golf club etc.
- // The old railway tracks could be retrofitted into a greenway
- // Opportunity to strengthen the tourism offer
- // Increase signage on the bypass road to encourage stops in the town
- // Public realm interventions to soften traffic and encourage pedestrian uses of the space
- // Creation of an amenity space - seats, play area, kiosks - along the river and increased links with the town
- // Creation of a centre for sculpture in the village



1 Butlersbridge features a pleasant countryside character in close proximity to larger urban centres



2 Views over the Erne River and Annalee River from Butlersbridge Riverside Walk



3 Some buildings in the village have recently been refreshed and repainted



4 Butlersbridge features some well maintained and regularly refreshed buildings and designated structures