

BALLYCONNELL

Revitalising Cavan's Towns and Villages

History

After the partition of Ireland in 1920-22, Ballyconnell found itself cut off from its hinterland with County Fermanagh, which was now behind the new border with Northern Ireland.

The town also suffered during the Irish Civil War of 1922-23 when it was raided repeatedly by both sides.

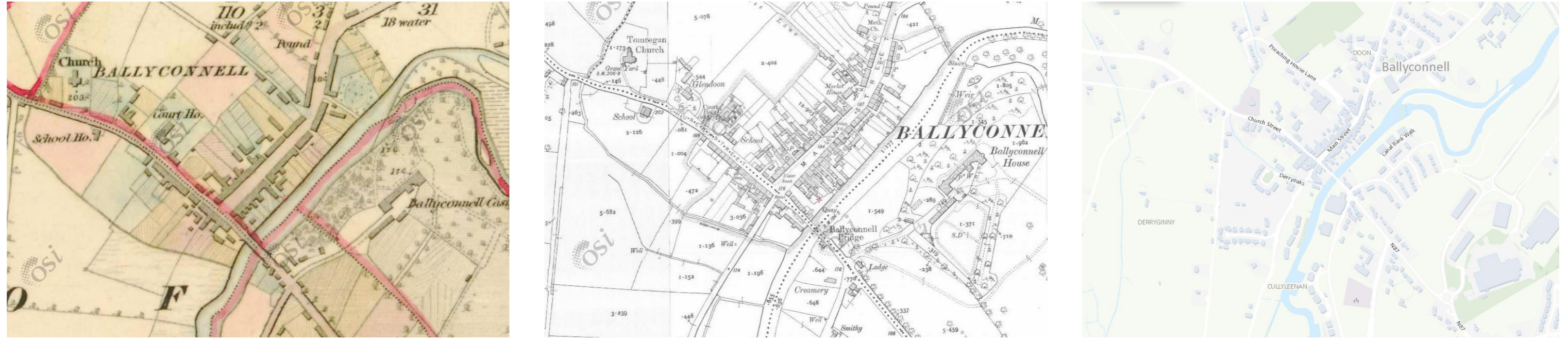


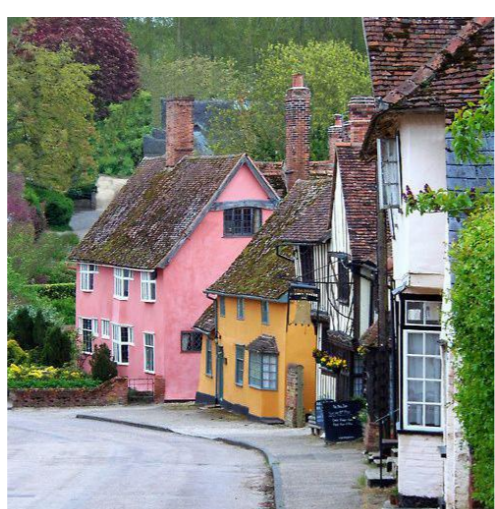
Figure 1.1.3 - Timeline evolution: 1800, 1900 and 2017



Precedents



Opportunity to create pedestrian friendly street



Opportunity to strengthen heritage value



Opportunity to improve public realm with local materials and plant species



Opportunity to re-purpose abandoned buildings

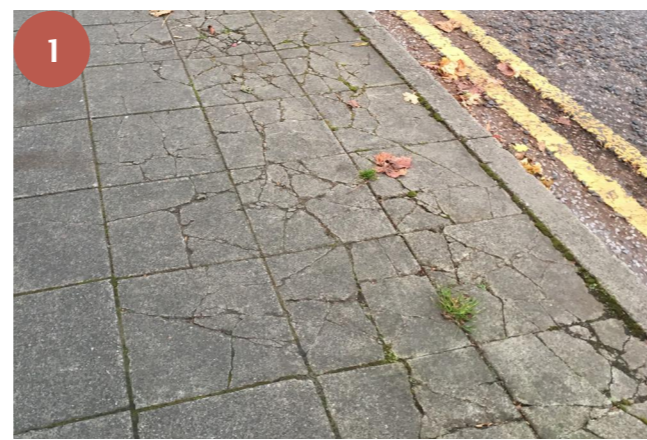


Opportunity to provide cycle amenities

Constraints

- W**
Weaknesses
- 1 // Damaged concrete paving, most likely caused by vehicles mounting the pavement, has allowed weeds to grow through and has created a sense of dilapidation in the public realm.
 - 2 // The wide roads and narrow pavements create an unwelcoming pedestrian experience.

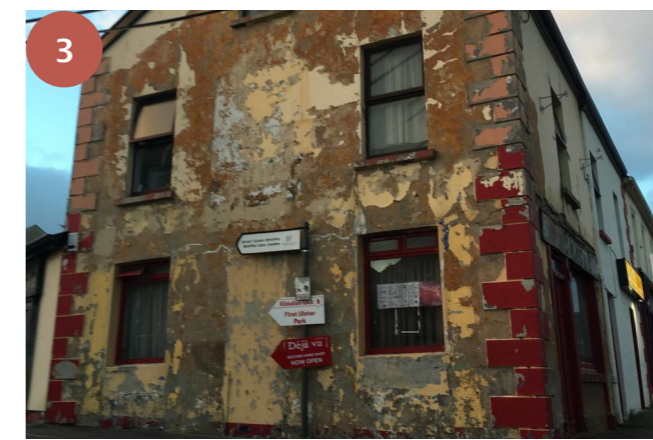
- T**
Threats / Challenges
- 3 // Dilapidated buildings in the town centre act as a disincentive for local investment by creating a sense of plight.
 - 4 // Furthermore, abandoned buildings add to this sense of plight and suggest a weak local property market.



Damaged pavements



Wide roads, narrow pavements



Dilapidated buildings

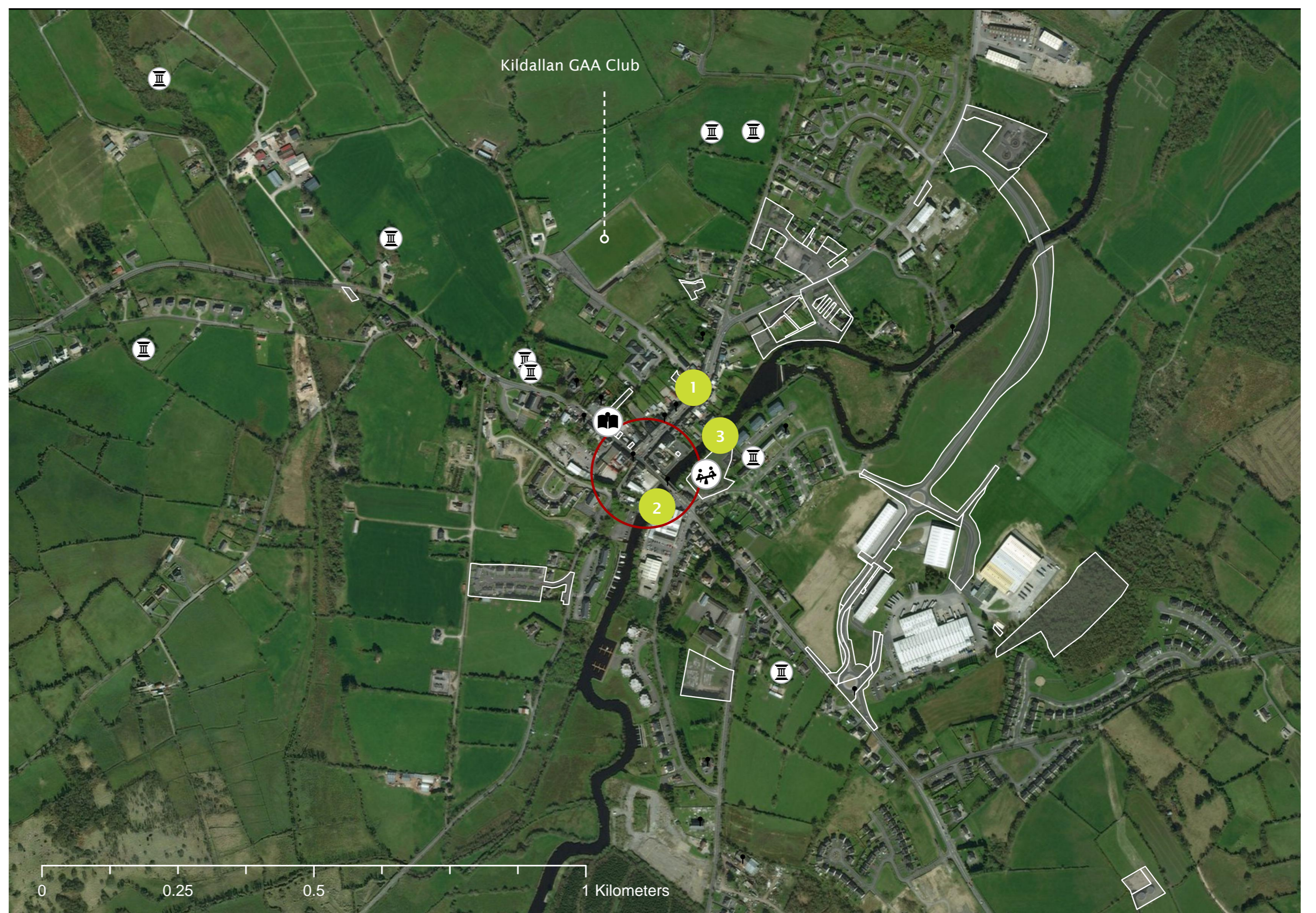


Derelict buildings

Opportunities

- S**
Strengths
- 1 // The former market square has recently been redeveloped with car parking converted back into a public square. Albeit, the market square is underutilised and lacks adequate seating and planting. Could be used for food market.
 - 2 // The waterfront onto the Woodford River is a natural asset that can be used for pubs, restaurants, retail and public space.

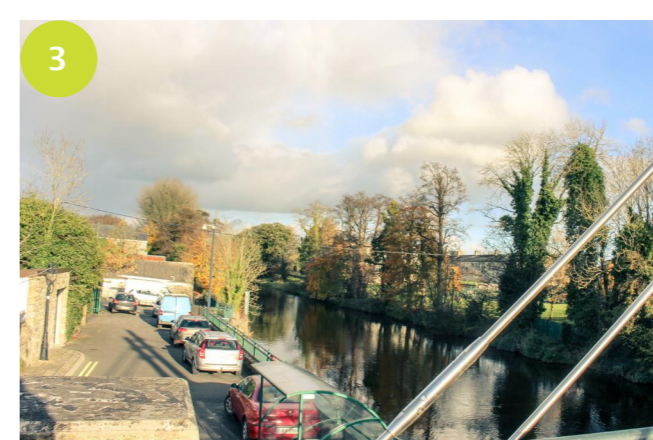
- O**
Opportunities
- 3 // The waterfront is currently not exploited to its full potential, it can be landscaped to bring pedestrians close to the water.
 - 4 // There are several heritage buildings in the town which can be sensitively refurbished to become hotels etc. which can generate local employment.



Newly redeveloped public space



Waterfront



Potential to open up waterfront to public



Heritage buildings can be exploited